

1 **Patient-derived mutations impact pathogenicity of SARS-CoV-2**

2 Hangping Yao<sup>1†</sup>, Xiangyun Lu<sup>1†</sup>, Qiong Chen<sup>2†</sup>, Kaijin Xu<sup>1</sup>, Yu Chen<sup>1</sup>, Linfang Cheng<sup>1</sup>,  
3 Fumin Liu<sup>1</sup>, Zhigang Wu<sup>1</sup>, Haibo Wu<sup>1</sup>, Changzhong Jin<sup>1</sup>, Min Zheng<sup>1\*</sup>, Nanping Wu<sup>1\*</sup>,  
4 Chao Jiang<sup>2,3\*</sup>, Lanjuan Li<sup>1\*</sup>

5

6 <sup>1</sup>State Key Laboratory for Diagnosis and Treatment of Infectious Diseases, National  
7 Clinical Research Center for Infectious Diseases, First Affiliated Hospital, Zhejiang  
8 University School of Medicine, Hangzhou, China.

9 <sup>2</sup>Life Sciences Institute, Zhejiang University, Hangzhou, China.

10 <sup>3</sup>Zhejiang Provincial Key Laboratory of Pancreatic Disease, First Affiliated Hospital,  
11 Zhejiang University School of Medicine, Hangzhou, China.

12 †Equal contributions.

13 \*Corresponding authors: M.Z. (minzheng@zju.edu.cn), N.W. (flwnp2013@163.com),  
14 C.J. (jiang\_chao@zju.edu.cn), and L.L. (ljli@zju.edu.cn).

15

16

17

18 **Summary (130 words)**

19 The sudden outbreak of the severe acute respiratory syndrome–coronavirus  
20 (SARS-CoV-2) has spread globally with more than 1,300,000 patients diagnosed and a  
21 death toll of 70,000. Current genomic survey data suggest that single nucleotide variants  
22 (SNVs) are abundant. However, no mutation has been directly linked with functional  
23 changes in viral pathogenicity. We report functional characterizations of 11  
24 patient-derived viral isolates. We observed diverse mutations in these viral isolates,  
25 including 6 different mutations in the spike glycoprotein (S protein), and 2 of which are  
26 different SNVs that led to the same missense mutation. Importantly, these viral isolates  
27 show significant variation in cytopathic effects and viral load, up to 270-fold differences,  
28 when infecting Vero-E6 cells. Therefore, we provide direct evidence that the  
29 SARS-CoV-2 has acquired mutations capable of substantially changing its pathogenicity.

30

31 **Introduction**

32 Severe acute respiratory syndrome coronavirus 2 (SARS-CoV-2; previously referred to as  
33 2019-nCoV), associated with the ongoing outbreak of atypical pneumonia, has already  
34 caused a global pandemic beginning in Wuhan, Central China, despite China's extensive

35 systematic effort to contain the outbreak. As of April 7, 2020, SARS-CoV-2 has infected  
36 more than 1.3 million people around the world with a death toll of 70,000. The numbers  
37 are still increasing rapidly. The estimate of the incubation period of SARS-CoV-2 (mean,  
38 5.1 days; range, 4.5 to 5.8 days) (Lauer et al., 2020) is in line with those of other known  
39 human coronaviruses, such as SARS (mean, 5 days; range, 2 to 14 days) (Varia et al.,  
40 2003) and MERS (mean, 5 to 7 days; range, 2 to 14 days) (Virlogeux et al., 2016). The  
41 reproductive number of SARS-CoV-2 is likely to be from 1.4 to 6.5, with a mean of 3.3  
42 (Liu et al., 2020), which is slightly higher than SARS, i.e., 2-5 (Bauch et al., 2005;  
43 Lipsitch et al., 2003) and MERS, i.e., 2.7-3.9 (Lin et al., 2018). More than half of patients  
44 with SARS-CoV-2 showed no signs of fever before hospitalization (Guan et al., 2020).  
45 Strikingly, Coronavirus Disease-2019 (COVID-19) can be transmitted by asymptomatic  
46 patients, who show no fever, gastrointestinal or respiratory symptoms, and have normal  
47 chest computed tomography (Bai et al., 2020; Hu et al., 2020), making it much more  
48 challenging to prevent the spread of COVID-19. Moreover, SARS-CoV-2 can remain  
49 viable and infectious in aerosols for multiple hours and up to 7 days on surfaces (van  
50 Doremalen et al., 2020). Although multiple *in vitro* studies or clinical trials on inhibitors  
51 or drugs were carried out, no effective cures or vaccines have been found so far (Cao et

52 al., 2020; Hoffmann et al., 2020; Wang et al., 2020). The World Health Organization  
53 (WHO) declared COVID-19 a Public Health Emergency of International Concern on 30  
54 January 2020, and raised the threat of the SARS-CoV-2 pandemic to the "very high"  
55 level on February 28, 2020.

56 SARS-CoV-2 is the seventh member of enveloped RNA beta-coronavirus  
57 (Sarbecovirus subgenus) (Zhu et al., 2020); SARS-CoV-2, SARS-CoV and MERS-CoV  
58 can lead to devastating diseases, while HKU1, NL63, OC43 and 229E are related with  
59 mild symptoms (Corman et al., 2018). So far, no recombination events were detected (Yu,  
60 2020), although this could be at least partially due to the fact that most viral isolates were  
61 sequenced with short-reads platform. The transmembrane spike (S) glycoprotein mediates  
62 viral entry into host cells through homotrimers protruding from the viral surface. The S  
63 protein includes two domains: S1 for binding to the host cell receptor and S2 for fusion of  
64 the viral and cellular membranes, respectively (Tortorici and Velesler, 2019). Both  
65 SARS-CoV-2 and SARS-CoV use the angiotensin converting enzyme 2 (ACE2) to enter  
66 target cells (Walls et al., 2020). ACE2 is expressed in human nasal epithelial cells and  
67 lung, spermatogonia, leydig, sertoli, gastric, duodenal, and rectal epithelial cells (Wang  
68 and Xu, 2020; Xiao et al., 2020; Zhao et al., 2020). The receptor binding domain (RBD)

69 in the S protein is the most variable genomic part in the betacoronavirus group (Wu et al.,  
70 2020; Zhou et al., 2020), and some sites of S protein might be subjected to positive  
71 selection (Lv et al., 2020). Despite the abundant variability of SARS-CoV-2, one key  
72 question remains as to whether these mutations have any real functional impact on the  
73 pathogenicity of SARS-CoV-2. This is crucial in our understanding of the viral infectious  
74 mechanisms and dictates the strategy of drug and vaccine development in preparation for  
75 the next stage of the pandemic.

76 To address this, we characterized 11 SARS-CoV-2 viral isolates from patients  
77 admitted to Zhejiang University-affiliated hospitals in Hangzhou, China, situated 757  
78 KMs to the east of Wuhan (see Materials and Methods). Super-deep sequencing of the 11  
79 viral isolates on the Novaseq 6000 platform identified 1-5 mutations in the coding  
80 sequences among the viral isolates. Mixed viral populations (representing quasi-species)  
81 were also observed. We infected Vero-E6 cells with 11 viral isolates and quantitatively  
82 assessed their viral load at 1, 2, 4, 8, 24, and 48 hours post infection (P.I.) and their viral  
83 cytopathic effects (CPE) at 48 and 72 hours P.I.. Our results show that the observed  
84 mutations can have a direct impact on the viral load and CPE when infecting Vero-E6  
85 cells, as much as 270-fold differences between the extremities. This finding suggests that

86 the observed mutations in our study, and possibly in the viral isolates collected around  
87 the world, can significantly impact the pathogenicity of SARS-CoV-2.

88

## 89 **Results**

### 90 **Summary of the epidemiological history of the patients**

91 The samples of the 11 patients involved in this study were collected during the early  
92 phase of the COVID-19 breakout in China, dates ranging from 1/22/2020 to 2/4/2020  
93 (Table 1). 10 of the 11 patients had clear connections with Wuhan city, where the  
94 SARS-CoV-2 was originally identified. 5 of the 11 people either worked in or traveled to  
95 Wuhan before they were diagnosed, and another 5 had close contact with people who  
96 lived in Wuhan, and the remaining person had contact with people who were COVID-19  
97 victims. Notably, patients ZJU-4, -5, -9 attended the same business conference where a  
98 few colleagues from Wuhan were present. These patients therefore constitute 1st and 2nd  
99 generations of the viral victims based on their epidemiological history. The 11 patients  
100 include 8 males and 3 females, with ages ranging from 4 months to 71 years old. There  
101 are no clear criteria in selecting these patients other than the fact that they were all  
102 admitted into Zhejiang University-affiliated hospitals in Hangzhou. All except one of the

103 patients had moderate or worse symptoms. 3 patients had co-morbidity conditions and  
 104 one patient needed ICU treatment. Luckily, all of the patients have recovered as of the  
 105 time of writing this article.

ID	Sex	Age	Sample	Sample collection date	Virus isolating date	Epidemiology	Viral gen	Onset symptoms	Severity	Blood pressure	ICU	Onset date	Admission	Discharge
ZJU_1	M	36	Sputum	1.25	1.29	Contact with people from Wuhan	2	Fever	Moderate	0	0	1.23	1.25	2.23
ZJU_2	M	31	Sputum	1.26	1.29	Lived in Wuhan	1	Fever	Severe	0	0	1.23	1.24	2.23
ZJU_3	M	32	Sputum	1.25	1.30	Traveled to Wuhan	2	Fever	Severe	0	0	1.18	1.19	2.12
ZJU_4	M	34	Sputum	1.24	1.28	Conference with colleagues from Wuhan	2	Fever, fatigue	Moderate	0	0	1.17	1.21	2.9
ZJU_5	F	25	Sputum	1.22	1.26	Conference with colleagues from Wuhan	2	Fever	Severe	0	0	1.21	1.22	2.9
ZJU_6	M	71	Sputum	2.2	2.6	Contact with people who had COVID19 Wuhan.	2 or 3	Fever, fatigue	Severe	1	0	1.22	1.26	2.19
ZJU_7	F	4M	Nasopharyngeal swab	2.3	2.8	Contact with people from Wuhan	2	Fever	Mild	0	0	1.29	1.29	2.20
ZJU_8	M	53	Sputum	1.26	1.30	Lived in Wuhan	1	Fever, fatigue	Critical	1	1	1.17	1.22	2.19
ZJU_9	M	30	Stool	1.28	2.7	Conference with colleagues from Wuhan	2	Fever	Severe	0	0	1.18	1.21	2.5
ZJU_10	F	38	Stool	2.3	2.8	Lived in Wuhan	1	Fever	Severe	0	0	1.19	1.27	2.12
ZJU_11	M	62	Stool	2.4	2.9	Lived in Wuhan	1	Coughing	Severe	1	0	1.19	1.26	3.15

106  
 107 **Table 1.** A summary of the epidemiological information of the 11 patients involved in  
 108 this study. The “Viral gen” (viral generation) was inferred based on their exposure  
 109 history.

110  
 111 **Ultra-deep sequencing reveals diverse mutations in the patient-derived viral isolates**  
 112 To assess the mutational spectrum of these 11 viral isolates, ultra-deep sequencing of the  
 113 isolated viral genomic RNA was performed on the Illumina Novaseq 6000 platform,

114 generating on average 245 million post-cleaning reads/67.16 Gb per sample (Table S1;  
115 average coverage exceeding 2,000,000 X). This extraordinary depth is partially due to the  
116 small genome of the SARS-CoV-2, which enables us to identify mutations with high  
117 confidence. Moreover, in cases where the viral populations are not homogenous, the  
118 depth could help us to characterize alleles with very low frequency.

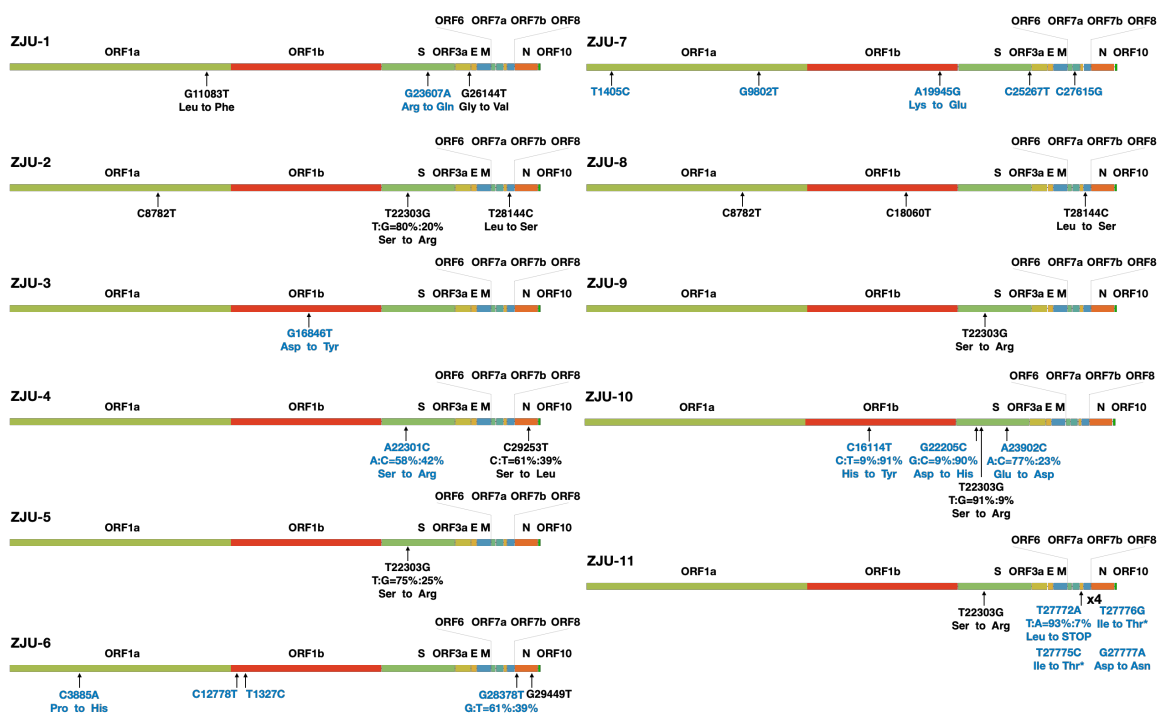
119 In total, 33 mutations were identified (including 10 mutations observed in  
120 mixed-populations), and 19 of these mutations were novel, according to the comparison  
121 with 1111 genomic sequences available at GISAID on 3/24/2020 (Fig. 1, S1, and S2).  
122 Specifically, G11083T and G26144T were found in ZJU-1, and both of these mutations  
123 are known as founding mutations for a large group of viruses (Capobianchi et al., 2020).  
124 C8782T and T28144C were found in two of our viral isolates, ZJU-2 and ZJU-8, and  
125 these two are known as the founding mutations for another large group of viral isolates  
126 (Capobianchi et al., 2020). Interestingly, mutation T22303G was found in five viral  
127 isolates (ZJU-2, -5, -9, -10, and -11) and ZJU-5 and ZJU-9 were exposed to the same  
128 potential source of infection during a business conference (Table 1). Previously, only one  
129 viral isolate identified in Australia had the T22303G mutation. Strikingly, the viral isolate  
130 from patient ZJU-4, who attended the same conference as ZJU-5 and ZJU-9, has a novel



131 mutation, A22301C, which causes the same missense mutation at the protein level  
132 (S247R in the S protein) as T22303G, mutating the 1st instead of the 3rd position in the  
133 respective codon. Observations of these two single nucleotide variants can only be  
134 coincidental, albeit very unexpected. Finally, the ZJU-11 has 4 mutations in the ORF7b  
135 gene, 3 of which are consecutive and introduce 2 mutations at the protein level.  
136 Di-nucleotide and Tri-nucleotide mutations are of course rarer than SNV, but not  
137 exponentially so, according to previous mutational accumulation studies in prokaryotes  
138 (Lynch, 2007).

139       It is important to note that while the sequence data deposited in GISAID are very  
140 helpful in tracking inter-personal variation of the virus, we still do not know much about  
141 intra-personal viral evolutionary dynamics. For example, in ZJU-4 and ZJU-10, alleles of  
142 two separate sites have very similar frequency distributions, indicating that these two  
143 sites are probably linked, representing at least two haplotypes within the viral populations.  
144 And as revealed by this study, 6 of the identified mutations would have been ignored if  
145 using the consensus sequences for analyses. Taken together, despite only 11  
146 patient-derived isolates being analyzed in this study, we observed abundant mutational  
147 diversity, including several founding mutations for different major clusters of viruses

148 now circulating globally. This diverse mutational spectrum is consistent with their  
 149 relatively early sampling time and relative proximity to Wuhan city, where the first viral  
 150 strain was identified. The full mutational diversity of the virus in Wuhan city in the early  
 151 days is still unknown to this day, due to limited sampling (Lu et al., 2020; Zhou et al.,  
 152 2020).



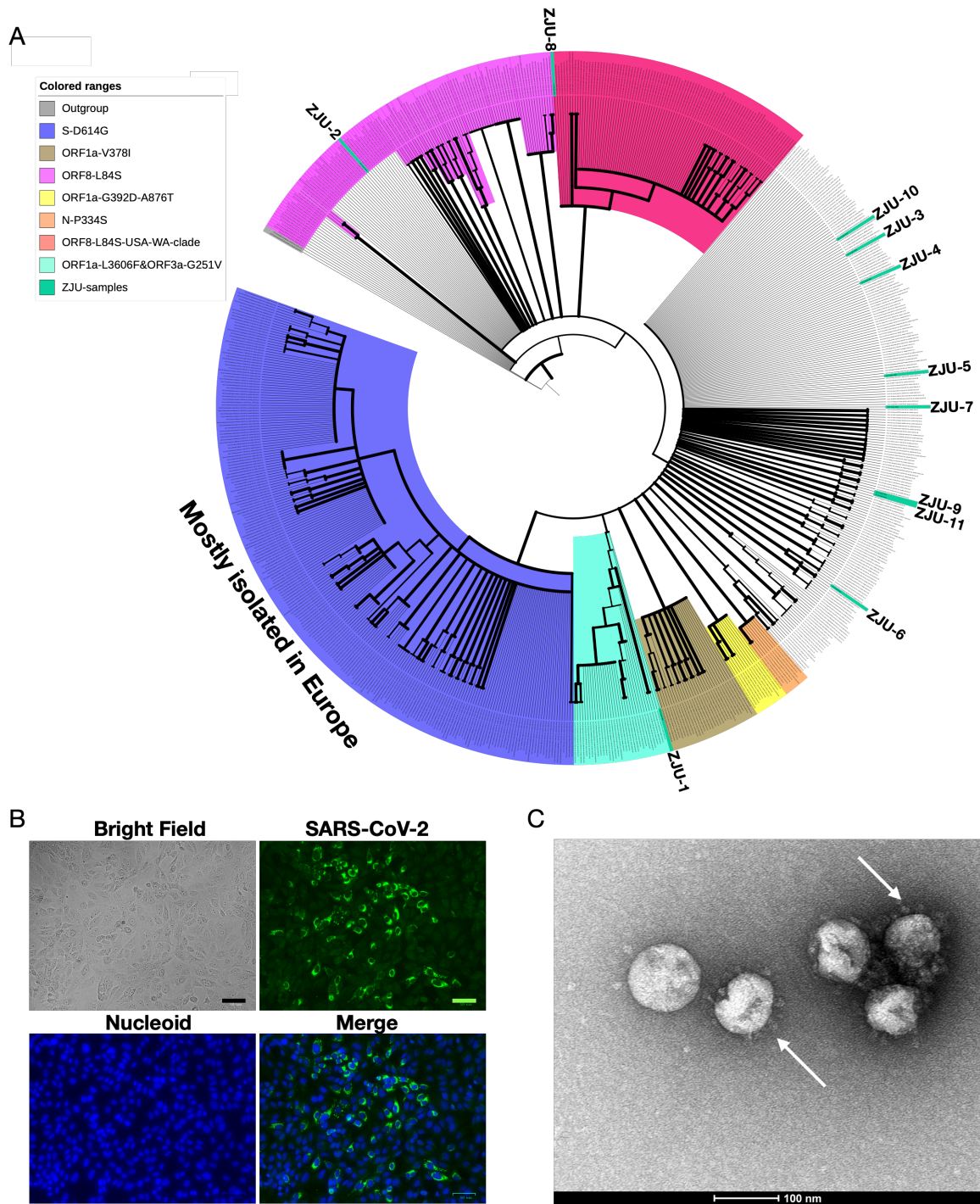
153  
 154 **Fig. 1.** A summary of the mutations identified in each of the 11 viral isolates. Each ORF  
 155 of the viral genome was denoted based on the annotations of NC\_045512.2 as provided  
 156 by NCBI. If a mutation was observed in the context of a mixed population, the respective  
 157 percentages of the top two alleles are provided. Changes at the amino acid level are  
 158 provided if applicable. Blue color indicates novel mutation at the time of writing the

159 article.

160

161 **Phylogenetic analysis of the patient-derived viral isolates reveals their diverse**  
162 **evolutionary history**

163 To understand the phylogenetic context of 11 viral isolates with respect to the corpus of  
164 available SARS-CoV-2 sequencing data, we acquired 725 high quality and high coverage  
165 SARS-CoV-2 genomes from GISAID (downloaded on 3/21/2020), including the Yunnan  
166 RaTG13 viral strain and the Guangdong pangolin viral strain as the outgroup. We aligned  
167 the 736 genomic sequences with MAFFT (see Materials and Methods) and trimmed the  
168 full-length alignment with trimAL (see Materials and Methods) to remove any spurious  
169 parts of the alignment. We used iqtree (see Materials and Methods) to construct a  
170 1000-times bootstrapped maximum-likelihood phylogenetic tree of the 736 viral sequences  
171 based on 835 parsimony informative sites (Fig. 2A). The resulting phylogenetic tree is  
172 largely consistent with the phylogenetic analysis being updated on GISAID (Fig. S3). We  
173 want to emphasize that due to the rapidly developing COVID-19 situation, tens or even  
174 hundreds of new sequences are being uploaded to the GISAID every day. As a result,  
175 new observations may be generated when more data are available.



176

177 **Fig. 2.** Characterizations of the patient-derived SARS-CoV-2 isolates. (A) Phylogenetic

178 analyses of the 11 viral isolates in the context of 725 SARS-CoV-2 sequences

179 downloaded from GISAID. The 1000-times bootstrapped maximum likelihood tree was  
180 constructed to demonstrate the phylogenetic context of the 11 viral isolates. Major and  
181 minor clusters were color-coded and denoted as shown in the “colored ranges” inset box.  
182 All ZJU- samples were color-coded as green. The width of a branch indicates bootstrap  
183 supporting level. (B) Fluorescent labeling of the viral S protein indicates that isolated  
184 SAR-CoV-2 viral particles (Green) bind to the peripherals of the Vero-E6 cells (DNA  
185 stained as Blue) prior to entry. Scale bars, 50  $\mu\text{m}$ . (C) A representative TEM picture of  
186 the isolated SAR-CoV-2 viral particles, arrows indicate the iconic “crown” consisted of S  
187 proteins (Spike). Scale bar, 100 nm.

188

189 We observed quite a few sets of founding mutations. Specifically, we note the  
190 following three biggest clusters in our phylogenetic analysis: 1. Three nucleotide  
191 mutations C241T (silent), C14408T (silent), and A23403G (D614G in S) found a group  
192 of 231 viral sequences (Fig. 2A; S-D614G cluster), most of which were isolated in  
193 Europe; 2. Two nucleotide mutations C8782T (silent) and T28144C (L84S in ORF8),  
194 found a group of 208 viral sequences (Fig. 2A; ORF8-L84S cluster), which is not

195 monophyletic in our analysis (Fig. 2A and S3). However, a distinct monophyletic  
196 subclade of 92 sequences within the ORF8-L84S cluster can be observed, mainly  
197 composed of viral sequences isolated from Seattle, USA (Fig. 2A;  
198 ORF8-L84S-USA-WA-clade); 3. Two nucleotide mutations, G11083T (L3606F in  
199 ORF1a), and G26144T (G251V in ORF3a) found a group of 34 viral sequences, most of  
200 which were from Netherlands and England. Several smaller monophyletic clusters,  
201 defined by different sets of founding mutations (bootstrap supporting value >95), can be  
202 observed. For examples: 1. the G1937A (V378I in ORF1a) mutation founds a cluster of  
203 31 viral sequences; 2. the G1440A and G2891A mutations, resulting in G392D and  
204 A876T mutations in the ORF1a gene, founds a cluster of 12 viral sequences, mostly from  
205 Germany or Netherlands; 3. the C15325T and C29303T mutations, resulting in P344S  
206 mutation in the N gene, founds a small cluster of 8 sequences, all of which are from  
207 China or Japan. When integrating the characterized 11 viral isolates into the phylogenetic  
208 analysis, they are dispersed across the entire phylogenetic space. ZJU-1 clusters with the  
209 ORF1a-L3606F & ORF3a-G251V groups, as it has both of the two defining mutations  
210 (Fig. 2A). ZJU-2 and ZJU-8, on the other hand, cluster with the ORF8-L84S cluster  
211 because they both have the two founding mutations (Fig. 2A). ZJU-9 and ZJU-11 cluster

212 with an Australian isolate because of the aforementioned T22303G mutation. The rest of  
213 the group either have few mutations or novel mutations that do not cluster with any  
214 known sizable groups, reflecting the extensive diversity within our 11 samples. Taken  
215 together, some monophyletic clusters of viruses do show obvious geographic patterns  
216 (Europe and WA-USA especially), but this could be due to the founding effect of  
217 respective mutations that happened early during the initial phase of the pandemic.

218

219 **Patient-derived SARS-CoV-2 isolates show significant variation in viral copy**  
220 **number and cytopathic effects when infecting Vero-E6 cells**

221 There is much speculations and many theories behind the observed mutations in  
222 sequenced viral isolates. Theoretically, one usually needs not often invoke selection  
223 arguments in explaining the origin of these mutations, as the human to human infection  
224 process is a series of repeated naturally-occurring bottlenecking events, in which the  
225 seeding viral population can be as little as hundreds of viral copies (Forni et al., 2017).  
226 Therefore, a significant portion of the genetic diversity or even population-specific  
227 fixations could be due to this process, where selection plays a small role (Renzette et al.,  
228 2017). We conducted Tajima's test of neutrality using the constructed alignment of viral

229 sequences and Tajima's D is -2.8874 with a nucleotide diversity ( $\pi$ ) of 0.000641 ( $p <$   
230 0.05 according to simulations performed in (Tajima, 1989), indicating that the  
231 SARS-CoV-2 genome has an excess of low-frequency alleles due to recent population  
232 expansions, consistent with the repeated bottlenecking events during viral infections.  
233 However, certain mutations do provide selection advantages or disadvantages under  
234 specific circumstances, as shown by the discovery that adaptive mutations are highly  
235 enriched in the interface between the S protein and the human ACE2 receptor (Ou et al.,  
236 2020).

237 To examine the mutational impact of the patient-derived SARS-CoV-2 isolates, we  
238 conducted *in vitro* infectivity assay. We chose *in vitro* assay because COVID-19 patients  
239 show a wide variety of clinical symptoms ranging from asymptomatic to death, and  
240 epidemiological research have shown that the clinical outcomes are heavily influenced by  
241 individual's age, complications, and other potential unknown parameters (Guan et al.,  
242 2020). We first examined whether the viral isolates could successfully bind to Vero-E6  
243 cells as expected (Fig. 2B), and visually identified the viral particles with the iconic  
244 "crown" formed by S proteins (Fig. 2C and S4A). We then infect the Vero-E6 cells with  
245 all 11 patient-derived viral isolates and harvest the cells at 1, 2, 4, 8 (in quadruplicates),



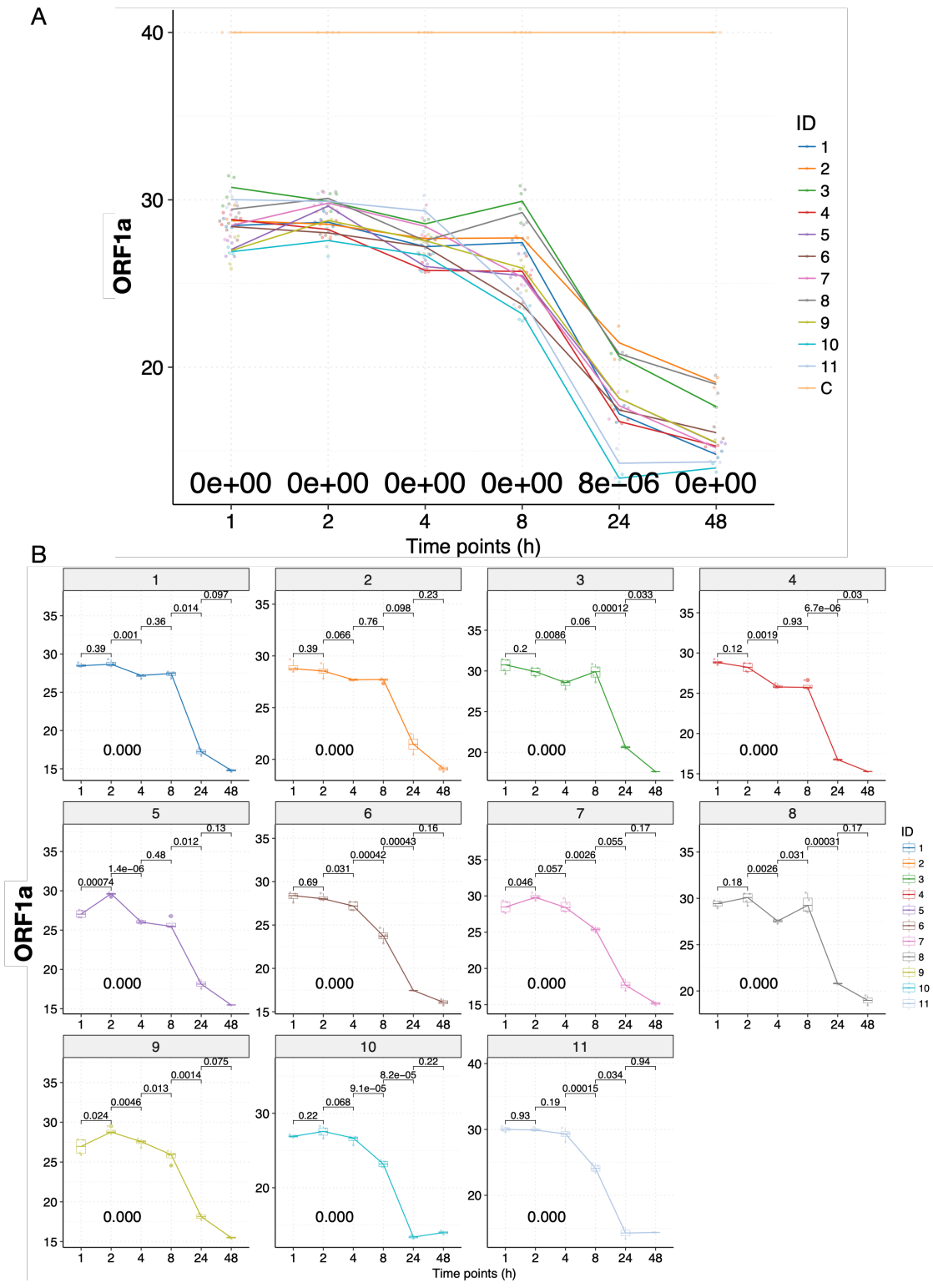
246 24, and 48 (in duplicates) hours P.I. (see Materials and Methods); we included the  
247 supernatant because cell death releases viral particles. DIC micrographs of the cells at 48  
248 hours and 72 hours P.I. were also taken to assess the CPE. We used specific real-time  
249 reverse transcriptase–polymerase chain reaction (RT-PCR) targeting ORF1a, E, and N  
250 genes to detect the presence of SARS-CoV-2 (see Materials and Methods). Cycle  
251 threshold values,  $C_t$ , were used to quantify the viral load, with lower values indicating  
252 higher viral load. Because the results based on the three genes are highly consistent ( $R >$   
253  $0.99$ ,  $p < 2.2e-16$ ), we will only discuss the results of the ORF1a gene (Fig. 3A). We  
254 failed to detect any significant signals from our negative controls, hence we simply  
255 assigned a  $C_t$  value of 40 for all them.

256 Briefly, the  $C_t$  values of samples remained mostly flat with small fluctuations for all  
257 of the viral isolates at 1, 2, and 4 hours P.I. (Fig. 3A and B). During these early hours,  
258 viral particles are binding to gain access into the cells, and replications would rarely  
259 occur (Schneider et al., 2012). At 8 hours P.I., we observed significant decreases in  $C_t$   
260 value (increases in viral load) for ZJU-6, ZJU-7, ZJU-9, ZJU-10, and ZJU-11. At 24  
261 hours P.I., we observed significant decreases in  $C_t$  values for all of the viral isolates  
262 except for ZJU-2 and ZJU-7, although some of the viral isolates, namely ZJU-10 and

263 ZJU-11, decreased much faster than the others (Fig. 3A and B). At 48 hours P.I., we  
264 observed small decreases for all viral isolates except for ZJU-10 and ZJU-11, both of  
265 which had presumably already plateaued at 24 hours P.I. (Fig. 3A and B). Notably, at 24  
266 hours P.I., ZJU-2 and ZJU-8, members of the ORF-8-L84S cluster (majority of USA  
267 WA-Seattle isolates are in this group), showed considerably lower viral loads (Fig. 4A).  
268 On the other hand, ZJU-1, which clusters with the S-D614G clade (mostly found in  
269 Europe), has a viral load 19 times ( $2^{4.25}$ ) higher than ZJU-2 and ZJU-8 (Fig. 4A). In  
270 addition, a near 270-fold difference ( $2^{8.09}$ ) in viral load was observed between ZJU-10  
271 and ZJU-2 at 24 hours P.I. (Fig. 4A). These differences became statistically significant at  
272 48 hours P.I., and are reproducible when analyzing data on gene E and N (Fig. S4B and C;  
273 Fig. S5A). Therefore, different viral isolates, which are defined by different mutations in  
274 their genomes, exhibit a significant variation of viral load when infecting Vero-E6 cells.

275 We next examined whether a higher viral load leads to more cell death (Fig. 4B).  
276 When examining these cell lines under a microscope at 48 hours and 72 hours P.I., the  
277 CPE, or the cell death rate, are highly consistent with the viral load data (Fig. 4C and S5B,  
278 C, and D; at 48 hours P.I.,  $C_t$  vs CPE,  $R = -0.72$ ,  $p = 0.015$ ), indicating that a higher viral  
279 load leads to a higher cell death ratio. Note that the  $C_t$  numbers are negatively correlated

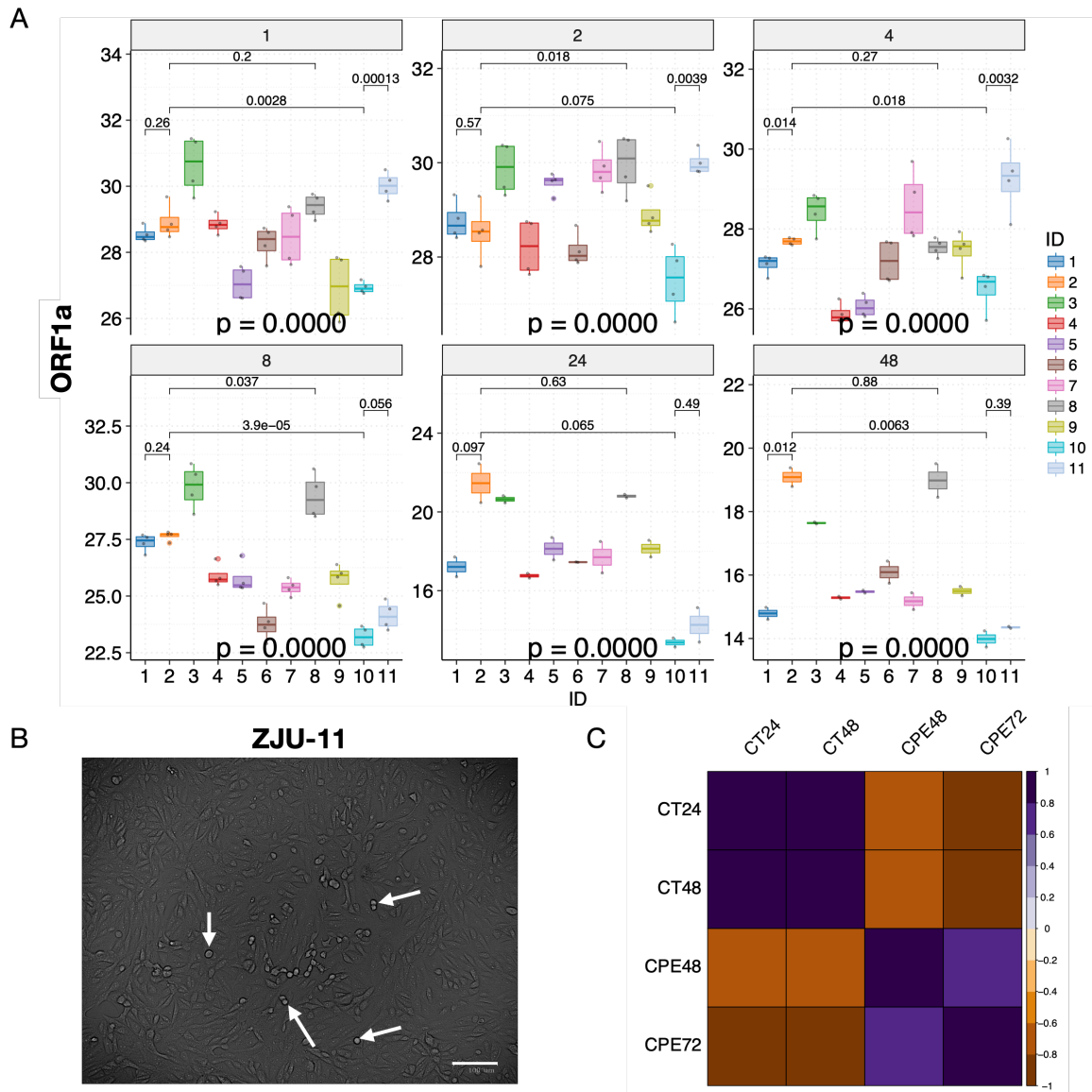
280 with the CPE because a lower  $C_t$  number means a higher viral load.



281

282 **Fig. 3.** The infectivity assay reveals temporal variation in the viral load of the  
283 patient-derived SARS-CoV-2 isolates when infecting Vero-E6 cells. (A) Time-series  
284 plots of the  $C_t$  values (corresponding to the multiplicative inverse of viral load) of the  
285 SAR-CoV-2 ORF1a gene over the course of infectivity assay. Each viral isolate plus the  
286 negative control “C” was color-coded accordingly. P-values were calculated using the  
287 ANOVA method to compare the means of all 11 viral isolates at each time point,  
288 excluding the negative control “C”. (B) Time-series plots of the  $C_t$  values of the  
289 SAR-CoV-2 ORF1a gene for each of the 11 patient-derived viral isolates. P-values were  
290 calculated between consecutive time points using the t-test and adjusted p-values are  
291 shown.

292



293

294 **Fig. 4.** The changes in CPE and viral load are highly correlated. (A) Significant  
 295 variations in viral load were observed at each time point. Mean  $C_t$  values of selected viral  
 296 isolates are displayed and color-coded, respectively. P-values were calculated using the  
 297 ANOVA method to compare the means of all 11 viral isolates at each time point.  
 298 Pair-wise p-values were calculated between isolates using the t-test and adjusted p-values

299 are shown. (B) Cytopathic effects were visible under the microscope 48 hours P.I., white  
300 arrows indicate representative cells undergoing lysis. (C) Cytopathic effects (CPE) were  
301 highly correlated with viral load (CT) in viral infectivity assay. Pearson correlations were  
302 calculated and p-values were adjusted accordingly; only correlations with adjusted  
303 p-value < 0.05 are shown. Note that the CT values are negatively correlated with CPE  
304 values because CT values represent the inverse number of viral loads.

305

## 306 **Discussion**

307 The quickly-developing COVID-19 pandemic has already infected millions of victims  
308 and caused 70,000 deaths globally. While many ongoing research projects are attempting  
309 to track the evolutionary origin of the virus, find the mechanisms of infection, and  
310 produce vaccines or drugs against the virus, we sought to establish the  
311 genotype-phenotype link behind the abundant diversity being observed as a result of  
312 global sequencing efforts (GISAID). Due to the extremely wide variety of clinical  
313 symptoms shown in the patients, establishing a genotype-phenotype link in patients  
314 would be very difficult. The *in vitro* cell line provides an ideal system to examine the  
315 mutational impact of different isolates of viruses, when all other confounding factors are

316 removed. Although the Vero-E6 cell line was not derived from human, the ACE2 protein  
317 of the Vero-E6 cell line is highly similar to that of Human (Fig. S6) and we provided  
318 direct evidence that the SARS-CoV-2 can infect the cell line (Fig. 2B).

319 Several findings stand out in our study: 1. A diverse collection of mutations was  
320 identified in the 11 viral isolates, including two sets of founding mutations for two major  
321 clusters of viruses currently infecting the world population. In addition, 19 of the 31  
322 identified mutations are novel, despite the relatively early sampling dates, indicating that  
323 the true diversity of the viral strains is still largely underappreciated; 2. remarkably, the  
324 T22303G and A22301C mutations result in the same S247R mutation in the S protein  
325 (Fig. 1 and S1), mapping to the existing structure revealed that this residue is located in a  
326 flexible loop region within the N-terminal domain of the S1 subunit of S protein,  
327 although the exact position of S247 could not be determined (Fig. S7, red arch). While  
328 the N-terminal domain is not directly involved with binding to ACE2 (Walls et al., 2020)  
329 we note that this domain is positioned right next to the C-terminal domain, which binds to  
330 ACE2. Interestingly, the T22303G mutation was observed in 5 viral isolates, albeit in  
331 different proportions, indicating that this specific mutation was already present in the  
332 early days of pandemic, and probably in a significant number of people of Wuhan,

333 despite the fact that it is still largely missing from current GISAID collection. This could  
334 be due to the founding effect of mutations, in which case the T22303G mutation was not  
335 transmitted out of the China during the early days; 3. The tri-nucleotide mutation in  
336 ZJU-11 is unexpected; we note that this specific viral isolate is quite potent in our viral  
337 load and CPE assay, and its patient remained positive for an astounding period of 45 days  
338 and was only recently discharged from the hospital (Table 1). Investigating the functional  
339 impact of this tri-nucleotide mutation would be highly interesting. We note that in the  
340 current database, another trinucleotide mutation (G28881A, G2882A and G28883C) has  
341 been identified, which also results in two missense mutations at the protein level (Fig. S8).  
342 It leads to a cluster of more than 300 viral strains as of the time of writing this article, and  
343 its mutational impact on the viral pathogenicity would be worth investigating. Finally, in  
344 contrary to the recent report that a viable viral isolate could not be obtained from stool  
345 samples, three of our viral isolated were extracted from stool samples, indicating that the  
346 SARS-CoV-2 is capable of replicating in stool samples (Woelfel et al., 2020).

347 In short, our study provides direct evidence that mutations currently occurring in the  
348 SARS-CoV-2 genome have the functional potential to impact the viral pathogenicity.  
349 Therefore, viral surveillance should be also performed at the cellular level when possible,



350 in addition to the accumulating genomic sequencing data. Furthermore, characterizations  
351 of all founding mutations in the major geo-based clusters of viruses could be very useful  
352 in helping determining if there are actionable pathogenicity differences to aid the current  
353 battle against the virus. Finally, similar to flu, drug and vaccine development, while  
354 urgent, need to take the impact of these accumulating mutations, especially the founding  
355 mutations, into account to avoid potential pitfalls.

356

### 357 **Figure legends**

358 **Table 1.** A summary of the epidemiological information of the 11 patients involved in  
359 this study. The “Viral gen” (viral generation) was inferred based on their exposure  
360 history.

361 **Fig. 1.** A summary of the mutations identified in each of the 11 viral isolates. Each ORF  
362 of the viral genome was denoted based on the annotations of NC\_045512.2 as provided  
363 by NCBI. If a mutation was observed in the context of a mixed population, the respective  
364 percentages of the top two alleles are provided. Changes at the amino acid level are  
365 provided if applicable. Blue color indicates novel mutation at the time of writing the  
366 article.

367 **Fig. 2.** Characterizations of the patient-derived SARS-CoV-2 isolates. (A) Phylogenetic  
368 analyses of the 11 viral isolates in the context of 725 SARS-CoV-2 sequences  
369 downloaded from GISAID. The 1000-times bootstrapped maximum likelihood tree was  
370 constructed to demonstrate the phylogenetic context of the 11 viral isolates. Major and  
371 minor clusters were color-coded and denoted as shown in the “colored ranges” inset box.  
372 All ZJU- samples were color-coded as green. The width of a branch indicates bootstrap  
373 supporting level. (B) Fluorescent labeling of the viral S protein indicates that isolated  
374 SAR-CoV-2 viral particles (Green) bind to the peripherals of the Vero-E6 cells (DNA  
375 stained as Blue) prior to entry. Scale bars, 50  $\mu\text{m}$ . (C) A representative TEM picture of  
376 the isolated SAR-CoV-2 viral particles, arrows indicate the iconic “crown” consisted of S  
377 proteins (Spike). Scale bar, 100 nm.

378 **Fig. 3.** The infectivity assay reveals temporal variation in the viral load of the  
379 patient-derived SARS-CoV-2 isolates when infecting Vero-E6 cells. (A) Time-series  
380 plots of the  $C_t$  values (corresponding to the multiplicative inverse of viral load) of the  
381 SAR-CoV-2 ORF1a gene over the course of infectivity assay. Each viral isolate plus the  
382 negative control “C” was color-coded accordingly. P-values were calculated using the

383 ANOVA method to compare the means of all 11 viral isolates at each time point,  
384 excluding the negative control “C”. (B) Time-series plots of the  $C_t$  values of the  
385 SAR-CoV-2 ORF1a gene for each of the 11 patient-derived viral isolates. P-values were  
386 calculated between consecutive time points using the t-test and adjusted p-values are  
387 shown.

388 **Fig. 4.** The changes in CPE and viral load are highly correlated. (A) Significant  
389 variations in viral load were observed at each time point. Mean  $C_t$  values of selected viral  
390 isolates are displayed and color-coded, respectively. P-values were calculated using the  
391 ANOVA method to compare the means of all 11 viral isolates at each time point.  
392 Pair-wise p-values were calculated between isolates using the t-test and adjusted p-values  
393 are shown. (B) Cytopathic effects were visible under the microscope 48 hours P.I., white  
394 arrows indicate representative cells undergoing lysis. (C) Cytopathic effects (CPE) were  
395 highly correlated with viral load (CT) in viral infectivity assay. Pearson correlations were  
396 calculated and p-values were adjusted accordingly; only correlations with adjusted  
397 p-value < 0.05 are shown. Note that the CT values are negatively correlated with CPE  
398 values because CT values represent the inverse number of viral loads.

399

400

## 401 **STAR Methods**

### 402 **Experimental Model and Subject Details**

403 Patients with confirmed COVID-19 were admitted in the First Affiliated Hospital from  
404 Jan 19 to Mar 5, 2020. The First Affiliated Hospital, located in Hangzhou, Zhejiang  
405 Province, China, is one of the major provincial hospitals designated to receive patients  
406 with COVID-19 infection across the Zhejiang Province; therefore, patients with severe  
407 symptoms outside of Hangzhou were also admitted. Starting Jan 10, 2020, all patients  
408 presenting to the hospital's fever clinic were screened by clinical staff for COVID-19  
409 infection utilizing criteria for suspected cases as defined by the National Health  
410 Commission of China's clinical diagnosis and management guideline for COVID-19  
411 (China National Health Committee, 2020). Briefly, patients were screened based on their  
412 clinical symptoms and their risk of epidemiological exposure, including past travel to  
413 Hubei Province or close contact with people who had visited Hubei Province during the  
414 COVID-19 outbreak. As the pandemic continued to spread, the probability of  
415 transmission outside of Hubei Province increased. The epidemiological exposure to  
416 Hubei Province was not a prerequisite for suspected cases. All suspected cases were  
417 determined by laboratory tests and based on positive results of qRT-PCR assay for  
418 COVID-19. Patients were excluded if two qRT-PCR tests 24 hours apart both suggested

419 negative results. Patients' clinical samples which PCR test C<sub>t</sub> value less than 28 were  
420 collected to isolate SARS-Cov-2.

421

## 422 **Method Details**

### 423 **Sample collection, Viral isolation, cell infection, and electron microscopy**

424 All samples, sources including sputum, nasopharyngeal swab, and stool, were collected  
425 from patients with COVID-19 with consent from all patients. The study was approved by  
426 the Clinical Research Ethics Committee of The First Affiliated Hospital, School of  
427 Medicine, Zhejiang University (Approval notice 2020-29) for emerging infectious  
428 diseases. All collected samples were sent to BSL-3 lab for viral isolation within 4 hours.

429 The sputum, stool, and nasopharyngeal swab samples were pre-processed by first  
430 mixing with appropriate volume (Sputum, 5-10 volumes; Stool, 2 ml/100 mg;  
431 Nasopharyngeal swab, 1 volume) of MEM medium with 2% FBS, Amphotericin B (100  
432 ng/ml), Penicillin G (200 units/ml), Streptomycin (200 µg/ml), and TPCK-trypsin (4  
433 µg/ml). The supernatant was collected after centrifugation at 3000 rpm at room  
434 temperature. Before infecting Vero-E6 cells, all collected supernatant was filtered using a  
435 0.45 µm filter to remove cell debris etc.

436 For viral infection and isolation, 3 ml of filtered supernatant was added to Vero-E6  
437 cells in a T25 culture flask. After incubation at 35°C for 2h to allow binding, the  
438 inoculum was removed and replaced with fresh culture medium. The cells were incubated  
439 at 35°C and observed daily to evaluate cytopathic effects (CPE). The supernatant was

440 tested for SARS-CoV-2 by qRT-PCR (see below for qRT-PCR protocol). Once the  
441 qRT-PCR test shows positive (typically after 4-5 days of incubation), the viral particles  
442 were collected from culture supernatant by ultra-speed centrifugation (100,000x g for 2  
443 hours) for downstream sequencing, infectivity assay, and were observed under 200 kV  
444 Tecnai G2 electron microscope.

445

#### 446 **Immunofluorescence staining**

447 Vero-E6 Cells were infected by SARS-CoV-2 for 24 hours, and then fixed in 80%  
448 acetone (chilled at -20°C) at room temperature for 10 min. The cells were washed three  
449 times with ice-cold PBS, blocked with 1% BSA for 30 min, and incubated with  
450 SARS-CoV-2 Spike rabbit monoclonal antibody (dilution ratio 1:200) at room  
451 temperature for 1 hour. The cells were again washed three times in ice-cold PBS, and  
452 then stained with the Alexa Fluor488®-conjugated Goat Anti-rabbit IgG secondary  
453 antibody (Abcam, Cat No. ab150077) for 1 hour at room temperature in the dark. The  
454 cells were washed three times and then incubated in 0.5 µg/mL DAPI (nuclear DNA stain)  
455 for 5 min. Immunofluorescence was detected and picture were taken using the IX81  
456 Olympus microscope equipped with a fluorescence apparatus.

457

#### 458 **Viral infectivity assay**

459 Vero-E6 cells were grown in a 24-well plate and infected with different SARS-CoV-2  
460 isolates in duplicates at MOI of 0.5. The inoculum was removed at 1 hours P.I. for the  
461 1-hour timepoint group and at 2 hours P.I. for other timepoint groups. After incubation,

462 the cultures were rinsed with PBS for three times and replenished with 1mL fresh culture  
463 medium. Then, the cultures were subjected to freezing immediately at -80°C for the 1-  
464 and 2-hours samples, or continued to grow for the other groups (4, 8, 24 and 48 hours)  
465 until harvest. Finally, all frozen samples from each timepoint were thawed together and  
466 the viral nucleic acid abundance was measured with SARS-CoV-2 qRT-PCR Kits,  
467 targeting ORF1a, E, and N genes (Liferiver Biotech, Shanghai). Results from the first  
468 two time points reflect the capacity of viral attachment or entry into the target cells, while  
469 results from the latter four time points represent the viral replication dynamics.

470

#### 471 **Cytopathic effect (CPE) evaluation**

472 Vero-E6 cell monolayers were grown and infected by different patient-derived  
473 SARS-CoV-2 isolates as described in the viral infectivity assay. At 24, 48, and 72 hours  
474 P.I., virus induced cytopathic effects were observed with a digital microscope (Bio-Rad)  
475 and pictures were taken. No obvious CPE was observed at 24 hours P.I.. Pictures taken at  
476 48 and 72 hours P.I. were evaluated first by expert opinions and then quantitated by cell  
477 death ratio.

478

## 479 **Sequencing library construction**

480 The total RNA in each deactivated viral sample was extracted using a viral RNA mini kit  
481 (Qiagen, Germany). The sequencing library was constructed using the Total RNA-Seq  
482 Kit (Kapa, Switzerland) and deep-sequenced on the illumina Novaseq 6000 platform (2 x  
483 151 bases; Illumina Inc., San Diego, CA) by BGI genomics.

484

## 485 **Quantification and Statistical Analysis**

### 486 **Statistical Analyses and visualization**

487 The majority of statistical analyses and visualizations were done in Rstudio and R (at the  
488 time of writing, 1.0143 for Rstudio and 3.4.0 for R), with necessary aid from customized  
489 python scripts (2.7.4) and shell scripts (Linux). The primary R packages are mostly  
490 maintained by the Bioconductor project (<https://www.bioconductor.org/>, along with all  
491 their dependencies). The essential ones used are ggplot2 (2.2.1), reshape2 (1.4.3),  
492 RColorBrewer (1.1-2), scales (0.5.0), corrplot (0.84), Hmisc (4.1-1), ggrepel (0.7.0),  
493 cluster (2.0.6), factoextra (1.0.5), plyr (1.8.4), dplyr (0.7.4), psych (1.7.8), devtools  
494 (1.13.4), ggpubr (0.1.6), tidyverse (1.2.1), gridExtra (2.3), ggsci (2.8), ggbeeswarm  
495 (0.6.0), ggpmisc (0.2.16), colorspace (1.3-2).



496 In general, parametric statistical tests (t-test, Anova, and Pearson correlation) were  
497 used when the data distribution conforms to normality distribution (such as qPCR  
498 measurements), and non-parametric statistical tests (Wilcoxon test, Kruskal-Wallis, and  
499 Spearman correlation) were used when datasets do not conform to the normality  
500 assumption. We adjust the p values using the Benjamini & Hochberg (BH) method  
501 (Benjamini and Yekutieli, 2001) to control for False Discovery Rate (FDR), when  
502 multiple comparisons are concerned, including p value matrix constructed when  
503 calculating correlations matrix among different features or samples.

504 The 3D structure of the S protein was visualized and downloaded from  
505 <https://www.rcsb.org/3d-view/6VSB/1>.

506

### 507 **Sequence data processing, de novo assembling, and mutation identifications**

508 Sequencing data was generated from Novaseq 6000 and first filtered of low quality and  
509 high barcode contamination by Soapnuke and then mapped to 43 complete genome  
510 references of 2019-nCoV (SARS-CoV-2) by BWA-MEM (Li and Durbin, 2009).  
511 References of SARS-CoV-2 were downloading from NCBI on date February 28th, 2020.  
512 Further, mapping reads that longer than 100nt were extracted for de novo assembly by

513 SPAdes (Bankevich et al., 2012) (v3.1.3) using an iterative short-read genome assembly  
514 module for pair-end reads. K-values were selected automatically at 33nt, 55nt and 77nt  
515 for these samples. After assembling, contigs was blasted to nt database (20190301) to  
516 confirm their origins, and only contigs belonging to coronavirus were retained for base  
517 correction. Next, filtering reads of each sample were mapped back to retained assembled  
518 contigs and bam-readcount was applied (--min-mapping-quality=5, other parameter was  
519 set default) to calculate the base frequency of every post of each assemble contigs.  
520 Meanwhile, Haplotypecaller of gatk was applied to call snp/indel based on the assembled  
521 contigs with reads quality higher than 20. Finally, bam files were inspected in igv  
522 manually to verify each mutation based on the number of reads mapped, the balance  
523 between reads mapped to plus and minus strands of the reference genome, and the  
524 relative positions of the mutations on these reads.

525

## 526 **Phylogenetic analysis**

527 We acquired 725 high quality and high coverage SARS-CoV-2 genomes from GISAID  
528 (downloaded on 3/21/2020), including the Yunnan RaTG13 viral strain and the  
529 Guangdong pangolin viral strain as the outgroup. We aligned the 736 genomic sequences

530 with MAFFT (Kato and Standley, 2013) with options --thread 16 --globalpair  
531 --maxiterate 1000 and trimmed the full-length alignment with trimAL (Capella-Gutiérrez  
532 et al., 2009) using the -automated1 option to remove any spurious parts of the alignment,  
533 which could introduce noise to the phylogenetic analysis process. We used iqtree  
534 (Nguyen et al., 2015) with options -bb 1000 -alrt 1000 -nt 64 -asr to construct a  
535 1000-times bootstrapped maximum-likelihood phylogenetic tree of the 736 viral sequences  
536 based on 835 parsimony informative sites. The resulting phylogenetic tree was imported  
537 in iTOL and visualized (Letunic and Bork, 2011). We conducted Tajima's test of  
538 neutrality based on the constructed alignment of viral sequences using MEGA 7 (Kumar  
539 et al., 2016).

540

#### 541 **Data and Software Availability**

542 The full-genome sequences of the 11 viral isolates have been deposited to the GISAID  
543 collection with the following IDs: EPI\_ISL\_415709, EPI\_ISL\_416042, EPI\_ISL\_416044,  
544 EPI\_ISL\_416046, EPI\_ISL\_415711, EPI\_ISL\_416047, EPI\_ISL\_416425,  
545 EPI\_ISL\_416473, EPI\_ISL\_416474, EPI\_ISL\_418990, and EPI\_ISL\_418991.

546 **Supplementary Figure Legends**

547 **Table S1.** A summary of the sequencing statistics of the 11 viral isolates involved in the  
548 study, Related to Figure 1. Note that ZJU\_10 and ZJU\_11 were sequenced in a different  
549 batch.

550 **Fig. S1.** A summary of the nucleotide mutations that lead to the S247R mutations  
551 observed in the 11 patient-derived isolates, Related to Figure 1. Note that some of the  
552 mutations are in the form of minor alleles. Images were produced by IGV.

553 **Fig. S2.** A summary of additional mutations in the S gene and the tri-nucleotide mutation,  
554 Related to Figure 1. Note that some of the mutations are in the form of minor alleles.  
555 Images were produced by IGV.

556 **Fig. S3.** Phylogenetic analyses produced from GISAID using time (top) or number of  
557 mutations (bottom) as the branch length, Related to Figure 2. Note that all three major  
558 clusters described in the study are labeled accordingly. The major distinction is that the  
559 ORF8-L84S clade is not monophyletic in our more computationally intensive and  
560 bootstrapping-supported approach.

561 **Fig. S4.** The characterizations of the 11 viral isolates, Related to Figure 2 and Figure 4.

562 (A) A representative TEM picture of the isolated SAR-CoV-2 viral particles, arrows

563 indicate the iconic “crown” consisted of S proteins (Spike). (B) Time-series plots of the

564  $C_t$  values (corresponding to the multiplicative inverse of viral load) of the SAR-CoV-2 E

565 gene (top) and N gene (bottom) over the course of infectivity assay. Each viral isolate

566 plus the negative control “C” was color-coded accordingly. P-values were calculated

567 using the ANOVA method to compare the means of all 11 viral isolates at each time

568 point, excluding the negative control “C”. (C) Time-series plots of the  $C_t$  values of the

569 SAR-CoV-2 E gene (left) and N gene (right) for each of the 11 patient-derived viral

570 isolates. P-values were calculated between consecutive time points using the t-test and

571 adjusted p-values are shown.

572 **Fig. S5.** Significant variations were observed in viral load and viral CPE among the 11

573 patient-derived isolates, Related to Figure 4. (A) Significant variations in viral load can

574 be observed based on E gene (left) and N gene (right). (B) CPE at 48h and 72h P.I. as

575 evaluated by an expert’s opinions. (C) CPE at 48h and 72h P.I. evaluated by quantitatively

576 calculating the cell death ratio (ratio.dead) for 1-3 images per viral isolate. The results

577 from (B) and (C) are highly correlated ( $R > 0.89$ ,  $p < 0.001$ ). (D) Representative images  
578 used for CPE evaluation, arrows indicate cells facing immediate death. Scale bars, 100  
579  $\mu\text{m}$ .

580 **Fig. S6.** The alignment of ACE2 protein sequences from human (Homo), Chimpanzee,  
581 and green monkey (from which the Vero-E6 cell line was derived), Related to Figure 2.  
582 Note that overall the ACE2 proteins are highly similar to each other. The alignment and  
583 image were produced by Jalview.

584 **Fig. S7.** The 3D structure of the S-protein with the S247R overlay, Related to Figure 1.  
585 The top (A), bottom (B), side (C), and close-up view (D) were provided. Note that the  
586 actual position of S247 was not determined in the original structure, hence a small red arc  
587 was in place to represent to the potential flexible loop conformation for (C) and (D). Also  
588 note that the protein complex is trimeric, but only one of the three mutations was labeled.  
589 The 3D structure of the S protein was visualized and downloaded from  
590 <https://www.rcsb.org/3d-view/6VSB/1>.

591 **Fig. S8.** The trinucleotide mutation (G28881A, G28882A, and G28883C) was identified  
592 in the GISAID dataset and is the founding mutation for a large cluster of viral isolates  
593 within the S-D614G group (European clade), Related to Figure 1.

#### 594 **Author Contributions**

595 M.Z., C.J., N.W., and L.L conceived and supervised the study. H.Y. and X.L. performed  
596 all the experiments, with help from K.X., Y.C., L.C., F.L., Z.W., H.W., and C. Jin. C.J.,  
597 M.Z., and Q.C. performed all the data analyses. C.J., Q.C., H.Y., and M.Z. drafted and  
598 revised the manuscript with input from all authors.

#### 599 **Acknowledgments**

600 We gratefully acknowledge Drs. X. Zhu, L. Xiang, J. Jensen, and M. Lynch for their  
601 helpful discussions. We thank Dr. V. Billing for her help on improving the manuscript.

#### 602 **Funding**

603 This work was supported by funds from Major Project of Zhejiang Provincial Science  
604 and Technology Department #2020C03123, National Science and Technology Major  
605 Project for the Control and Prevention of Major Infectious Diseases in China

606 (2018ZX10711001, 2018ZX10102001, 2018ZX10302206), and start-up funds from Life  
607 Sciences Institute at Zhejiang University.

608 **Declaration of Interests**

609 None

610 **References**

611 Bai, Y., Yao, L., Wei, T., Tian, F., Jin, D.Y., Chen, L., and Wang, M. (2020). Presumed Asymptomatic  
612 Carrier Transmission of COVID-19. *JAMA - J. Am. Med. Assoc.*

613 Bankevich, A., Nurk, S., Antipov, D., Gurevich, A.A., Dvorkin, M., Kulikov, A.S., Lesin, V.M., Nikolenko,  
614 S.I., Pham, S., Prjibelski, A.D., et al. (2012). SPAdes: A new genome assembly algorithm and its  
615 applications to single-cell sequencing. *J. Comput. Biol.* *19*, 455–477.

616 Bauch, C.T., Lloyd-Smith, J.O., Coffee, M.P., and Galvani, A.P. (2005). Dynamically modeling SARS and  
617 other newly emerging respiratory illnesses: Past, present, and future. *Epidemiology* *16*, 791–801.

618 Benjamini, Y., and Yekutieli, D. (2001). The control of the false discovery rate in multiple testing under  
619 dependency. *Ann. Stat.* *29*, 1165–1188.

620 Cao, B., Wang, Y., Wen, D., Liu, W., Wang, J., Fan, G., Ruan, L., Song, B., Cai, Y., Wei, M., et al. (2020). A  
621 Trial of Lopinavir-Ritonavir in Adults Hospitalized with Severe Covid-19. *N. Engl. J. Med.* 1–13.



622 Capella-Gutiérrez, S., Silla-Martínez, J.M., and Gabaldón, T. (2009). trimAl: A tool for automated  
623 alignment trimming in large-scale phylogenetic analyses. *Bioinformatics*.

624 Capobianchi, M.R., Rueca, M., Messina, F., Giombini, E., Carletti, F., Colavita, F., Castilletti, C., Lalle, E.,  
625 Bordi, L., Vairo, F., et al. (2020). Molecular characterization of SARS-CoV-2 from the first case of  
626 COVID-19 in Italy. *Clin Microbiol Infect* *0*.

627 China National Health Committee (2020). COVID-19 clinical diagnosis and management guideline issued  
628 by National Health Commission of China, the 5th edition.

629 Corman, V.M., Muth, D., Niemeyer, D., and Drosten, C. (2018). Hosts and Sources of Endemic Human  
630 Coronaviruses. In *Advances in Virus Research*, pp. 163–188.

631 van Doremalen, N., Bushmaker, T., Morris, D.H., Holbrook, M.G., Gamble, A., Williamson, B.N., Tamin,  
632 A., Harcourt, J.L., Thornburg, N.J., Gerber, S.I., et al. (2020). Aerosol and Surface Stability of  
633 SARS-CoV-2 as Compared with SARS-CoV-1. *N. Engl. J. Med*.

634 Forni, D., Cagliani, R., Clerici, M., and Sironi, M. (2017). Molecular Evolution of Human Coronavirus  
635 Genomes. *Trends Microbiol.* *25*, 35–48.

636 Guan, W., Ni, Z., Hu, Y., Liang, W., Ou, C., He, J., Liu, L., Shan, H., Lei, C., Hui, D.S., et al. (2020).  
637 Clinical characteristics of 2019 novel coronavirus infection in China. *N. Engl. J. Med*.

638 Hoffmann, M., Kleine-Weber, H., Schroeder, S., Krüger, N., Herrler, T., Erichsen, S., Schiergens, T.S.,

639 Herrler, G., Wu, N.-H., Nitsche, A., et al. (2020). SARS-CoV-2 Cell Entry Depends on ACE2 and  
640 TMPRSS2 and Is Blocked by a Clinically Proven Protease Inhibitor. *Cell* 1–10.

641 Hu, Z., Song, C., Xu, C., Jin, G., Chen, Y., Xu, X., Ma, H., Chen, W., Lin, Y., Zheng, Y., et al. (2020).  
642 Clinical characteristics of 24 asymptomatic infections with COVID-19 screened among close contacts in  
643 Nanjing, China. *Sci. China Life Sci.*

644 Katoh, K., and Standley, D.M. (2013). MAFFT Multiple Sequence Alignment Software Version 7:  
645 Improvements in Performance and Usability. *Mol. Biol. Evol.* 30, 772–780.

646 Kumar, S., Stecher, G., and Tamura, K. (2016). MEGA7: Molecular Evolutionary Genetics Analysis  
647 Version 7.0 for Bigger Datasets. *Mol. Biol. Evol.*

648 Lauer, S.A., Grantz, K.H., Bi, Q., Jones, F.K., Zheng, Q., Meredith, H.R., Azman, A.S., Reich, N.G., and  
649 Lessler, J. (2020). The Incubation Period of Coronavirus Disease 2019 (COVID-19) From Publicly  
650 Reported Confirmed Cases: Estimation and Application. *Ann. Intern. Med.*

651 Letunic, I., and Bork, P. (2011). Interactive Tree of Life v2: Online annotation and display of phylogenetic  
652 trees made easy. *Nucleic Acids Res.* 39, W475–W478.

653 Li, H., and Durbin, R. (2009). Fast and accurate short read alignment with Burrows-Wheeler transform.  
654 *Bioinformatics* 25, 1754–1760.

655 Lin, Q., Chiu, A.P.Y., Zhao, S., and He, D. (2018). Modeling the spread of Middle East respiratory

656 syndrome coronavirus in Saudi Arabia. *Stat. Methods Med. Res.* 27, 1968–1978.

657 Lipsitch, M., Cohen, T., Cooper, B., Robins, J.M., Ma, S., James, L., Gopalakrishna, G., Chew, S.K., Tan,  
658 C.C., Samore, M.H., et al. (2003). Transmission dynamics and control of severe acute respiratory syndrome.  
659 *Science* (80-. ). 300, 1966–1970.

660 Liu, Y., Gayle, A.A., Wilder-Smith, A., and Rocklöv, J. (2020). The reproductive number of COVID-19 is  
661 higher compared to SARS coronavirus. *J. Travel Med.*

662 Lu, R., Zhao, X., Li, J., Niu, P., Yang, B., Wu, H., Wang, W., Song, H., Huang, B., Zhu, N., et al. (2020).  
663 Genomic characterisation and epidemiology of 2019 novel coronavirus: implications for virus origins and  
664 receptor binding. *Lancet* 395, 565–574.

665 Lv, L., Li, G., Chen, J., Liang, X., and Li, Y. (2020). Comparative genomic analysis revealed specific  
666 mutation pattern between human coronavirus SARS-CoV-2 and Bat-SARSr-CoV RaTG13. *BioRxiv*  
667 2020.02.27.969006.

668 Lynch, M. (2007). *The Origins of Genome Architecture.*

669 Nguyen, L.T., Schmidt, H.A., Von Haeseler, A., and Minh, B.Q. (2015). IQ-TREE: A fast and effective  
670 stochastic algorithm for estimating maximum-likelihood phylogenies. *Mol. Biol. Evol.*

671 Ou, J., Zhou, Z., Zhang, J., Lan, W., Zhao, S., Wu, J., Seto, D., Zhang, G., and Zhang, Q. (2020). RBD  
672 mutations from circulating SARS-CoV-2 strains enhance the structure stability and infectivity of the spike

673 protein. *BioRxiv* 2020.03.15.991844.

674 Renzette, N., Pfeifer, S.P., Matuszewski, S., Kowalik, T.F., and Jensen, J.D. (2017). On the Analysis of  
675 Intrahost and Interhost Viral Populations: Human Cytomegalovirus as a Case Study of Pitfalls and  
676 Expectations. *J. Virol.* *91*, e01976-16.

677 Schneider, M., Ackermann, K., Stuart, M., Wex, C., Protzer, U., Schätzl, H.M., and Gilch, S. (2012). Severe  
678 Acute Respiratory Syndrome Coronavirus Replication Is Severely Impaired by MG132 due to  
679 Proteasome-Independent Inhibition of M-Calpain. *J. Virol.* *86*, 10112–10122.

680 Tajima, F. (1989). Statistical method for testing the neutral mutation hypothesis by DNA polymorphism.

681 Tortorici, M.A., and Veessler, D. (2019). Structural insights into coronavirus entry. In *Advances in Virus*  
682 *Research*, pp. 93–116.

683 Varia, M., Wilson, S., Sarwal, S., McGeer, A., Gournis, E., Galanis, E., and Henry, B. (2003). Investigation  
684 of a nosocomial outbreak of severe acute respiratory syndrome (SARS) in Toronto, Canada. *Cmaj* *169*,  
685 285–292.

686 Virlogeux, V., Fang, V.J., Park, M., Wu, J.T., and Cowling, B.J. (2016). Comparison of incubation period  
687 distribution of human infections with MERS-CoV in South Korea and Saudi Arabia. *Sci. Rep.* *6*.

688 Walls, A.C., Park, Y.-J., Tortorici, M.A., Wall, A., McGuire, A.T., and Veessler, D. (2020). Structure,  
689 Function, and Antigenicity of the SARS-CoV-2 Spike Glycoprotein. *Cell*.

690 Wang, Z., and Xu, X. (2020). scRNA-seq profiling of human testes reveals the presence of ACE2 receptor,  
691 a target for SARS-CoV-2 infection, in spermatogonia, Leydig and Sertoli cells. *Viruses* 1–16.

692 Wang, C., Li, W., Drabek, D., Okba, N.M.A., Haperen, R. van, Osterhaus, A.D.M.E., Kuppeveld, F.J.M.  
693 van, Haagmans, B.L., Grosveld, F., and Bosch, B.-J. (2020). A human monoclonal 1 antibody blocking  
694 SARS-CoV-2 infection. *BioRxiv* 2020.03.11.987958.

695 Woelfel, R., Corman, V.M., Guggemos, W., Seilmaier, M., Zange, S., Mueller, M.A., Niemeyer, D., Vollmar,  
696 P., Rothe, C., Hoelscher, M., et al. (2020). Clinical presentation and virological assessment of hospitalized  
697 cases of coronavirus disease 2019 in a travel-associated transmission cluster. *MedRxiv*  
698 2020.03.05.20030502.

699 Wu, F., Zhao, S., Yu, B., Chen, Y.M., Wang, W., Song, Z.G., Hu, Y., Tao, Z.W., Tian, J.H., Pei, Y.Y., et al.  
700 (2020). A new coronavirus associated with human respiratory disease in China. *Nature* 579, 265–269.

701 Xiao, F., Tang, M., Zheng, X., Liu, Y., Li, X., and Shan, H. (2020). Evidence for gastrointestinal infection  
702 of SARS-CoV-2. *Gastroenterology*.

703 Yu, W.-B. (2020). Decoding evolution and transmissions of novel pneumonia coronavirus (SARS-CoV-2)  
704 using the whole genomic data Comparative analyses of the chloroplast genome in carnivorous plants View  
705 project. *ChinaXriv*.

706 Zhao, Y., Zhao, Z., Wang, Y., Zhou, Y., Ma, Y., and Zuo, W. (2020). Single-cell RNA expression profiling

707 of ACE2, the putative receptor of Wuhan 2019-nCov. *BioRxiv* 2020.01.26.919985.

708 Zhou, P., Yang, X. Lou, Wang, X.G., Hu, B., Zhang, L., Zhang, W., Si, H.R., Zhu, Y., Li, B., Huang, C.L.,

709 et al. (2020). A pneumonia outbreak associated with a new coronavirus of probable bat origin. *Nature* 579,

710 270–273.

711 Zhu, N., Zhang, D., Wang, W., Li, X., Yang, B., Song, J., Zhao, X., Huang, B., Shi, W., Lu, R., et al. (2020).

712 A novel coronavirus from patients with pneumonia in China, 2019. *N. Engl. J. Med.* 382, 727–733.

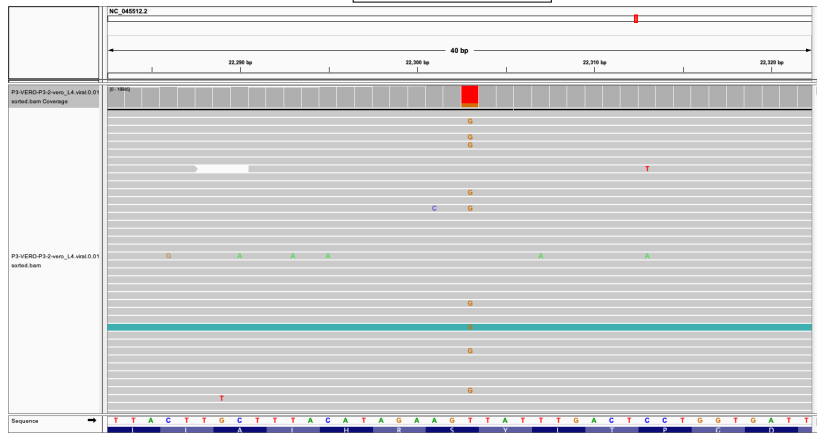
713

ID	Raw reads	Clean reads	Raw bases(G)	Clean bases(G)	coverage	Clean rate	Error_rate_fq 1	Error_rate_fq 2
ZJU_1	239,755,367	227,931,734	71.93	63.96	2,138,916	88.92%	0.04%	0.04%
ZJU_2	211,974,282	195,211,677	63.59	53.28	1,781,761	83.78%	0.04%	0.04%
ZJU_3	421,726,717	378,718,257	126.52	103.91	3,474,902	82.13%	0.04%	0.04%
ZJU_4	485,306,221	434,439,201	145.59	118.99	3,979,199	81.73%	0.04%	0.04%
ZJU_5	232,311,525	205,222,721	69.69	56.11	1,876,400	80.52%	0.04%	0.04%
ZJU_6	342,183,998	273,708,578	102.66	70.92	2,371,668	69.09%	0.04%	0.04%
ZJU_7	227,769,540	191,916,976	68.33	52.18	1,744,975	76.37%	0.04%	0.05%
ZJU_8	355,648,629	331,651,060	106.69	90.7	3,033,140	85.01%	0.04%	0.04%
ZJU_9	287,524,792	260,634,803	86.26	72.7	2,431,194	84.28%	0.04%	0.04%
ZJU_10	136,595,606	101,832,137	40.98	28.24	944,387	68.91%	0.02%	0.03%
ZJU_11	121,791,338	96,729,474	36.54	27.76	928,335	75.98%	0.02%	0.03%
<b>Average</b>	<b>278,417,092</b>	<b>245,272,420</b>	<b>83.53</b>	<b>67.16</b>	<b>2,245,898</b>	<b>79.70%</b>	<b>0.04%</b>	<b>0.04%</b>

**Table S1.** A summary of the sequencing statistics of the 11 viral isolates involved in the study. Note that ZJU\_10 and ZJU\_11 were sequenced in a different batch.

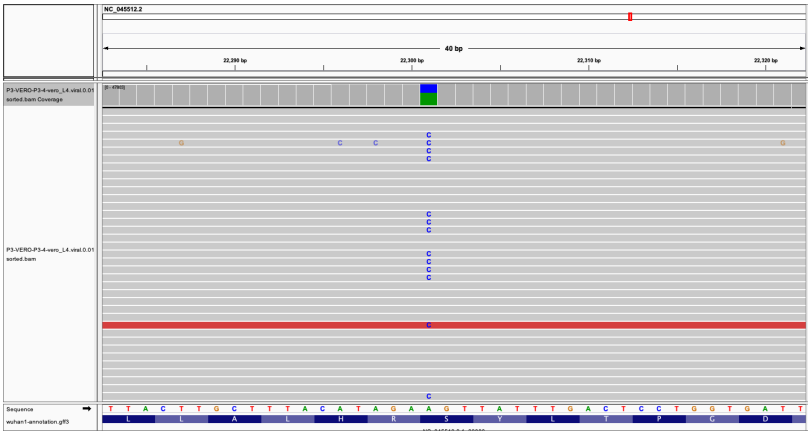
ZJU-2

T22303G  
T:G=80%:20%  
Ser to Arg



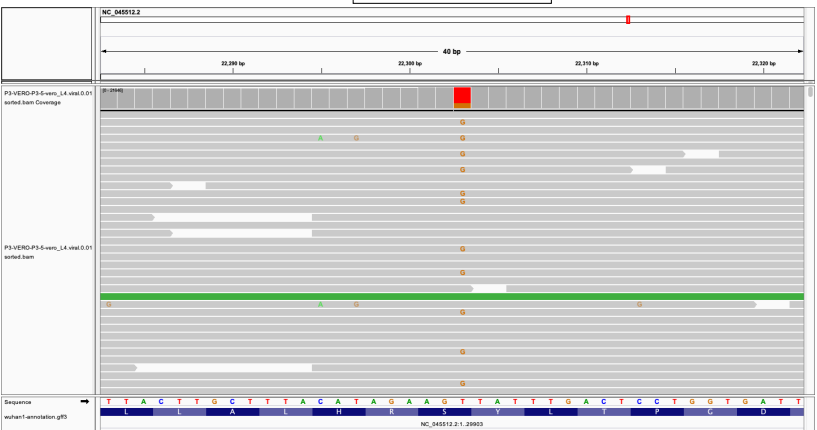
ZJU-4

A22301C  
A:C=58%:42%  
Ser to Arg



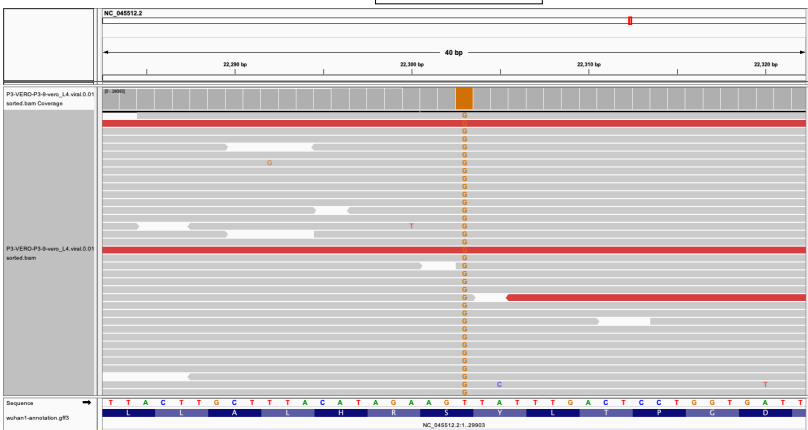
ZJU-5

T22303G  
T:G=75%:25%  
Ser to Arg



ZJU-9

T22303G  
Ser to Arg



ZJU-10

T22303G  
T:G=91%:9%  
Ser to Arg



ZJU-11

T22303G  
Ser to Arg

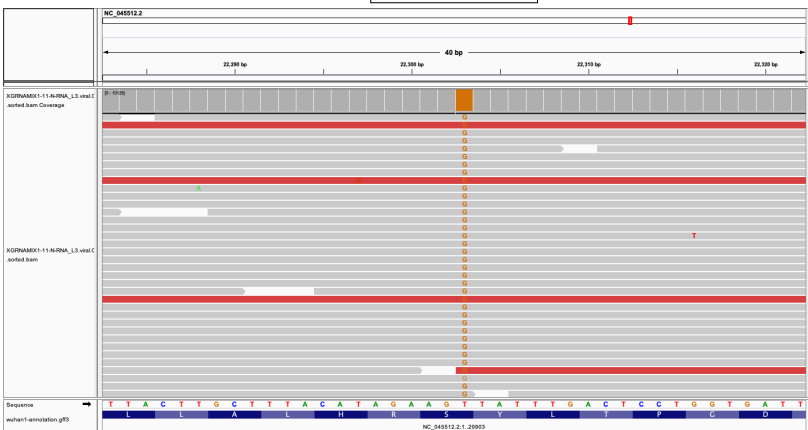
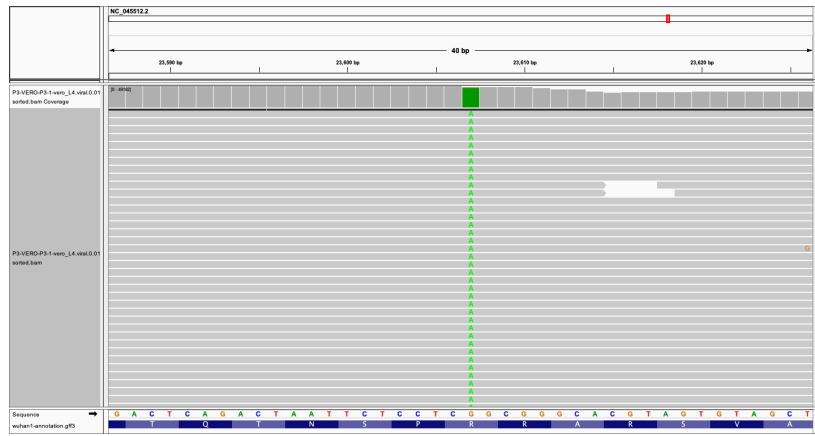


Fig. S1. A summary of the nucleotide mutations that lead to the S247R mutations observed in the 11 patient-derived isolates. Note that some of the mutations are in the form of minor alleles. Images were produced by IGV.



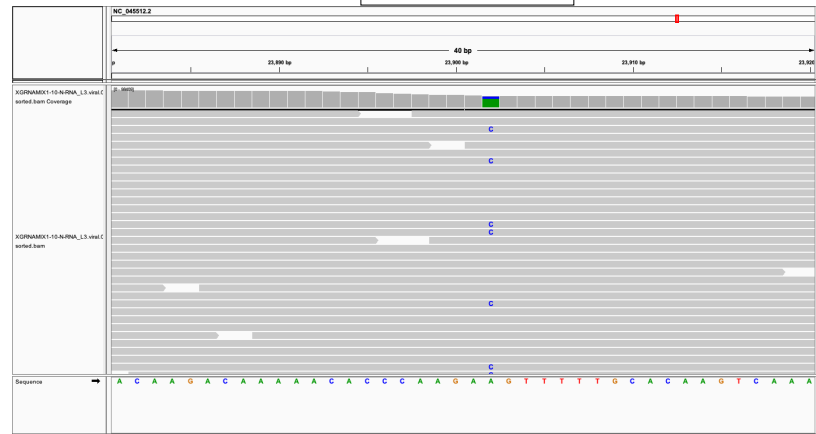
ZJU-1

G23607A  
Arg to Gln



ZJU-10

A23902C  
A:C=77%:23%  
Glu to Asp



ZJU-10

G22205C  
G:C=9%:90%  
Asp to His



ZJU-11

T27775C  
Ile to Thr\*

T27776G  
Ile to Thr\*

G27777A  
Asp to Asn

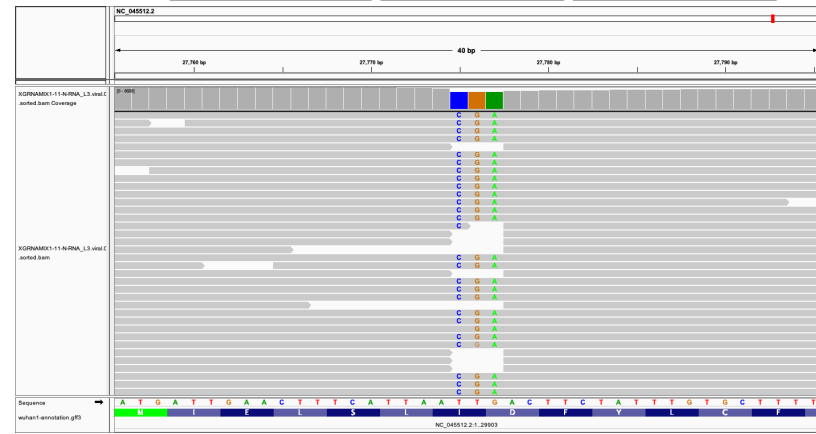
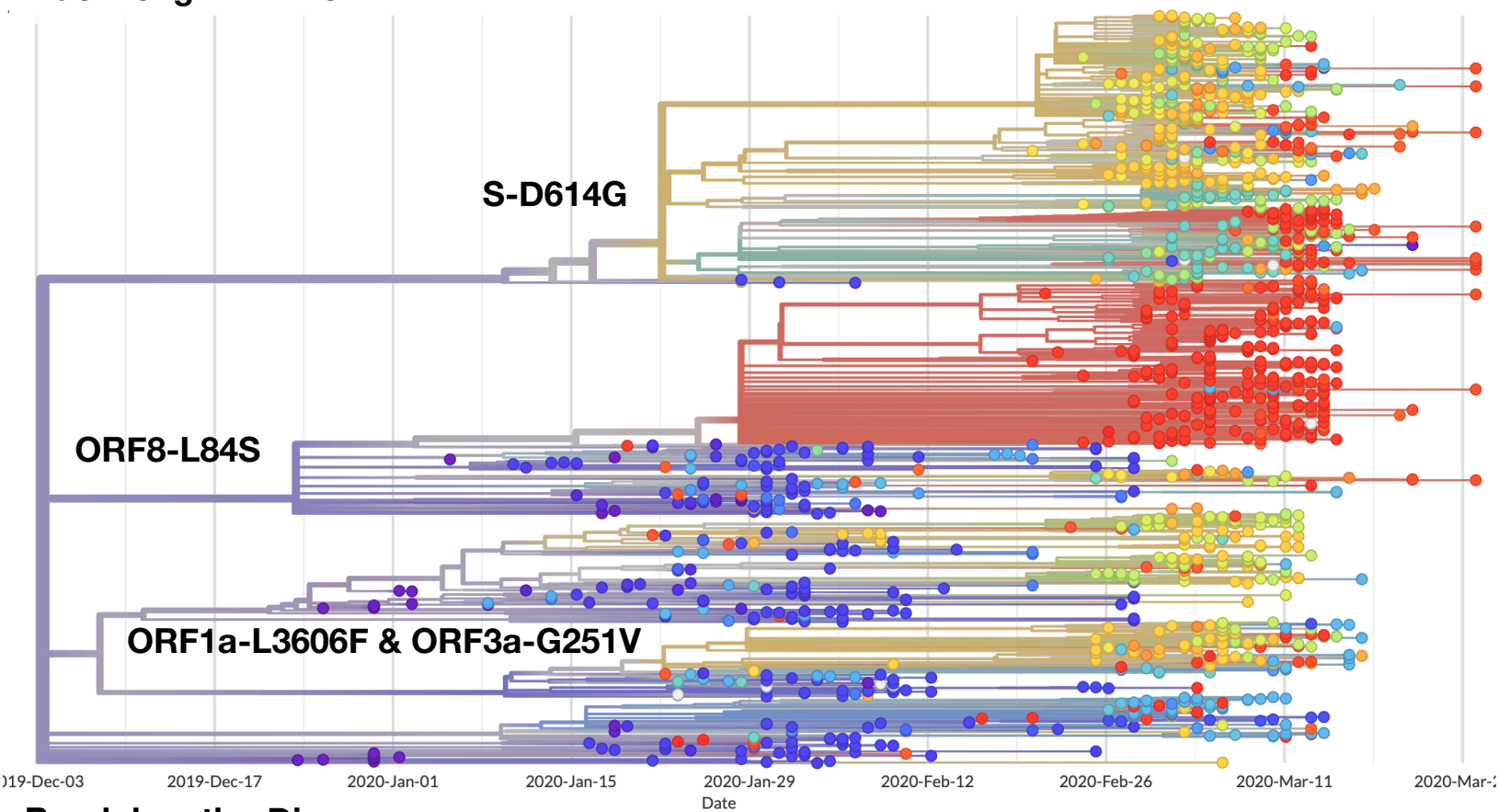
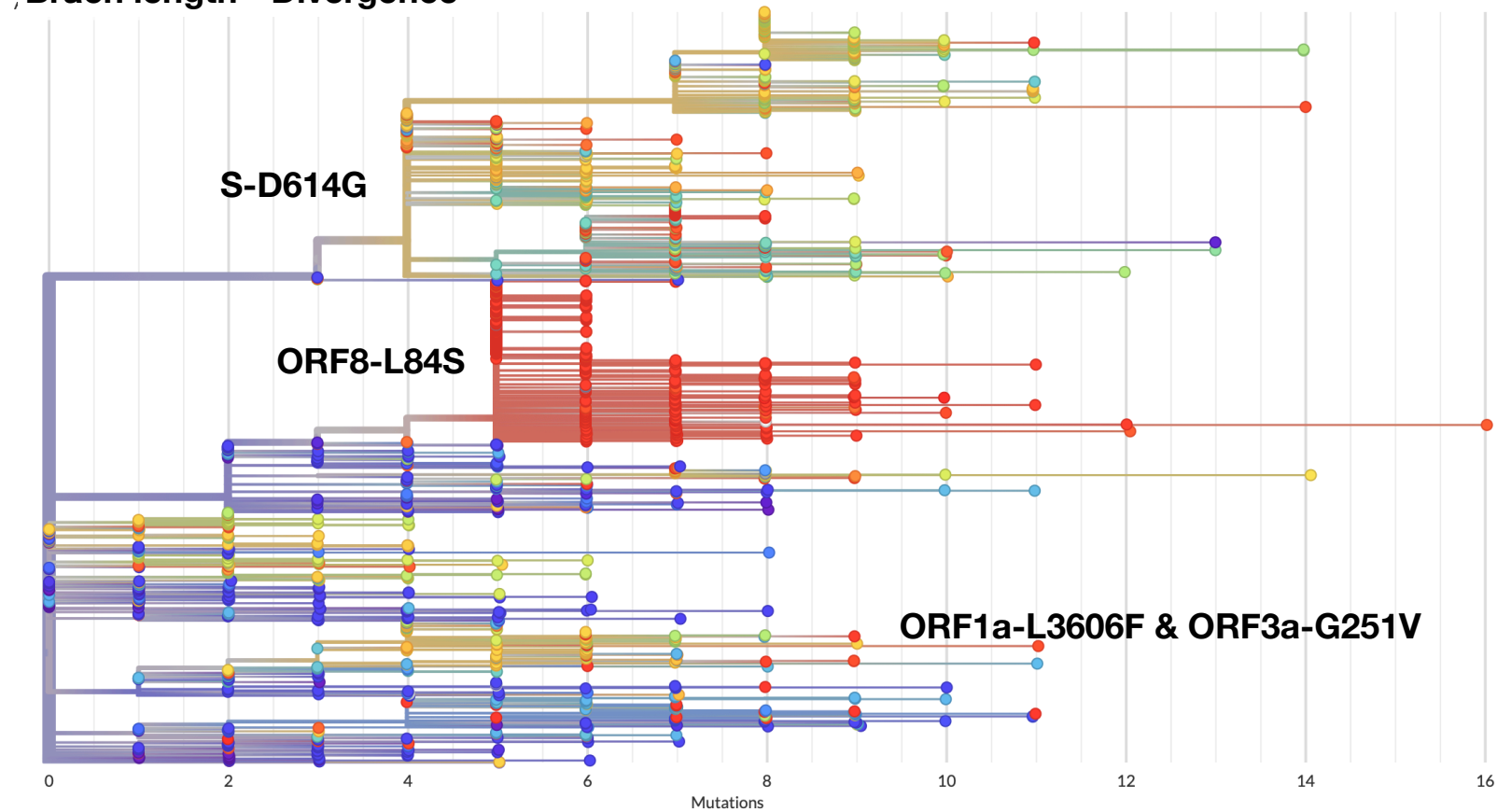


Fig. S2. A summary of additional mutations in the S gene and the tri-nucleotide mutation. Note that some of the mutations are in the form of minor alleles. Images were produced by IGV.

## Brach length - Time



## Brach length - Divergence

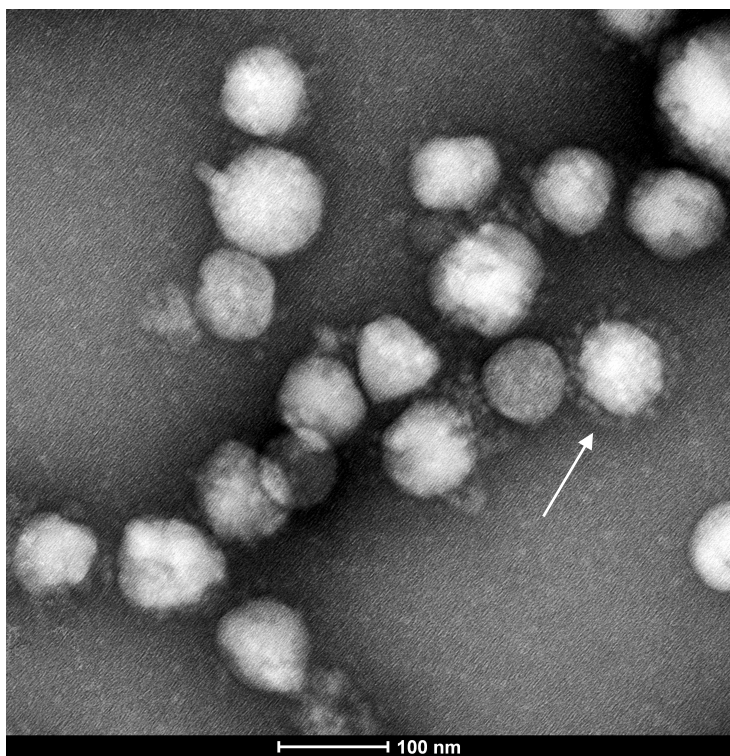


Analyses downloaded on 3/28/2020

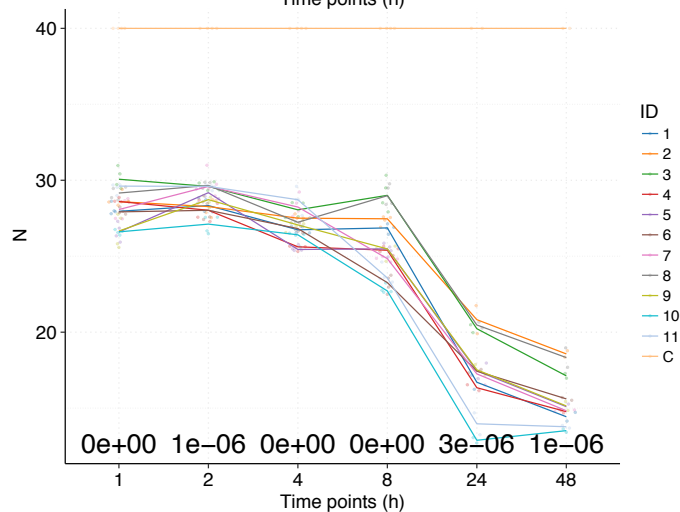
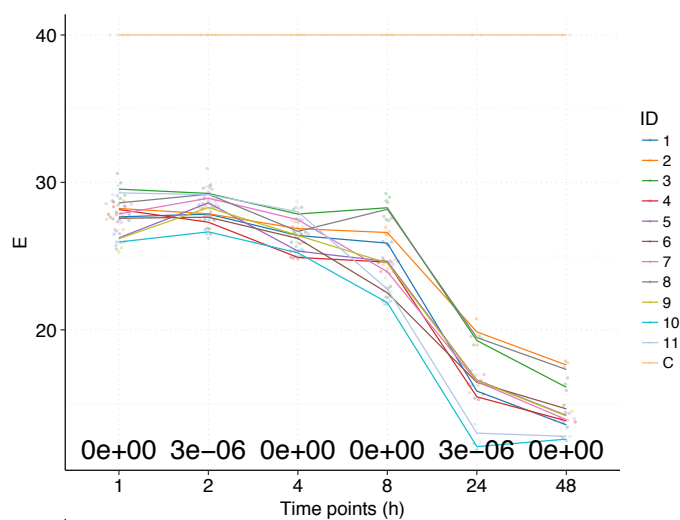
**Fig. S3.** Phylogenetic analyses produced from GISAID using time (top) or number of mutations (bottom) as the branch length.

Note that all three major clusters described in the study are labeled accordingly. The major distinction is that the ORF8-L84S clade is not monophyletic in our more computationally intensive and bootstrapping-supported approach.

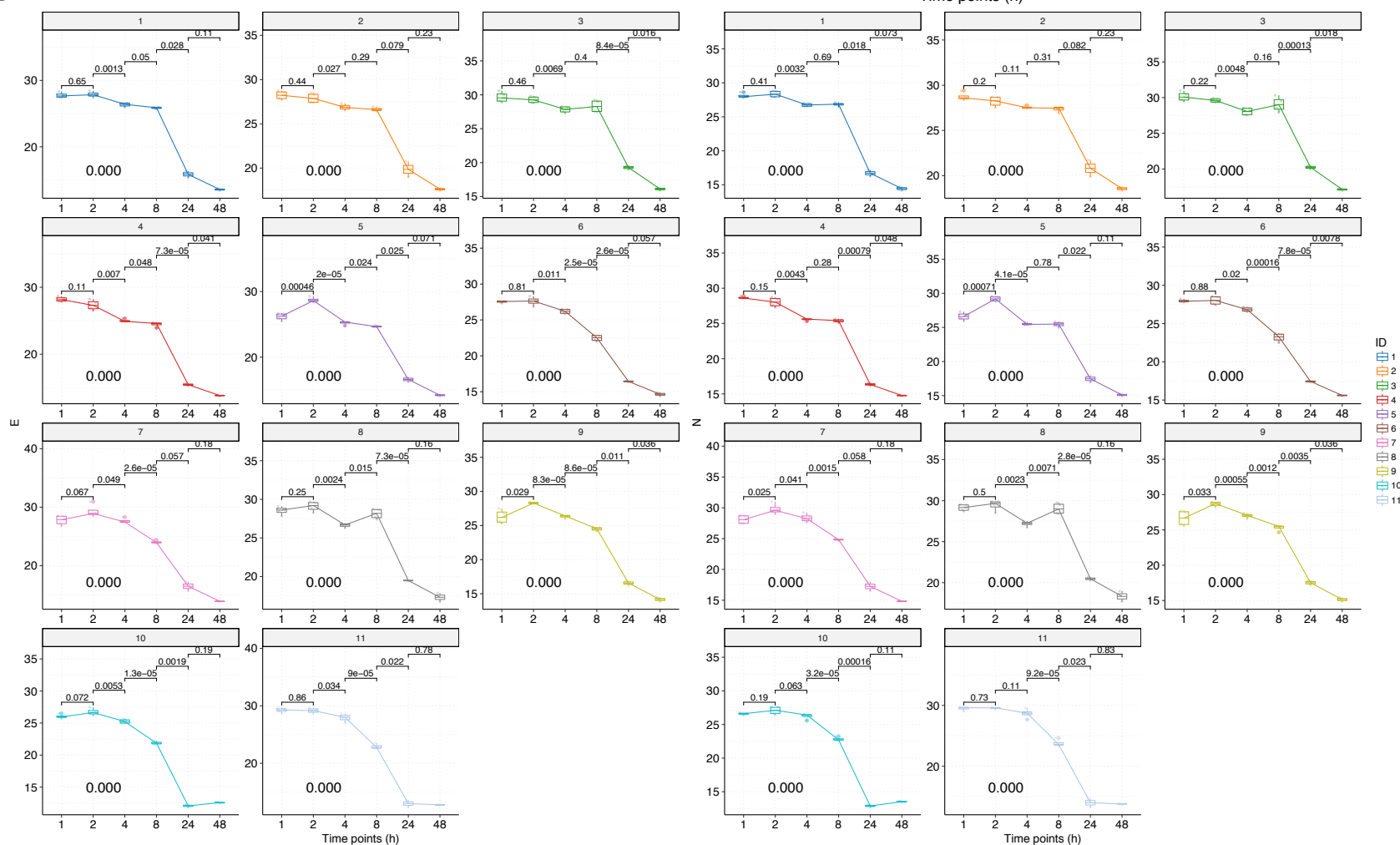
A



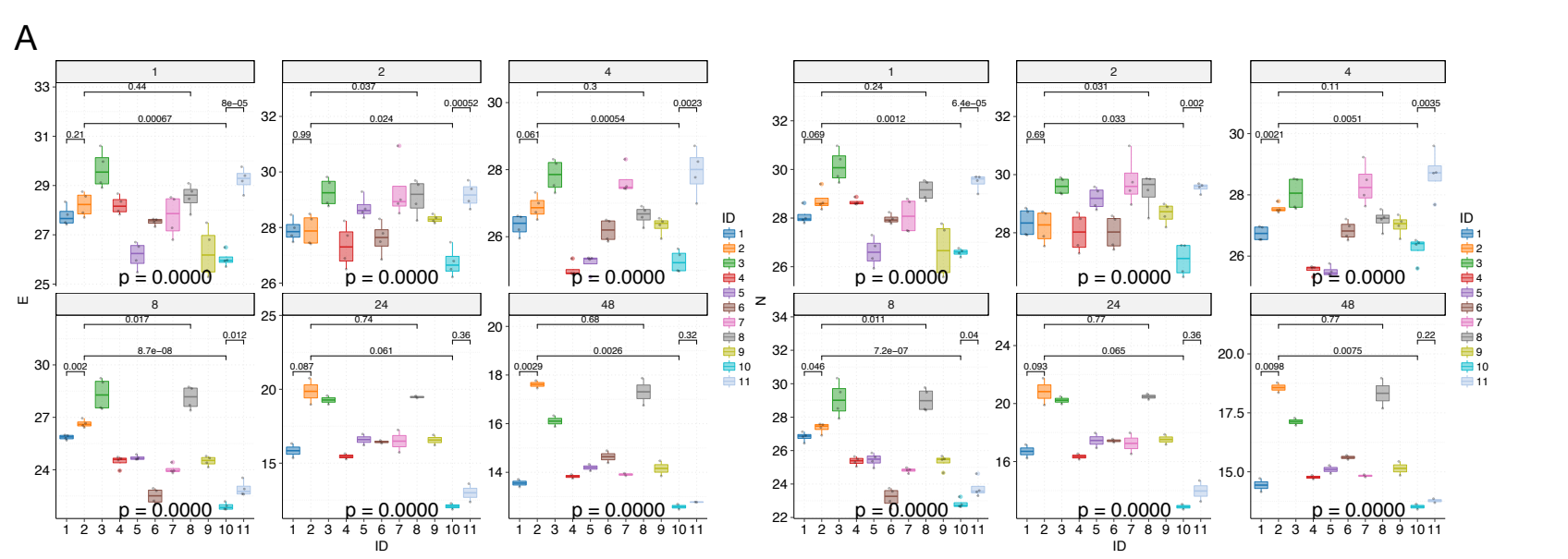
B



C

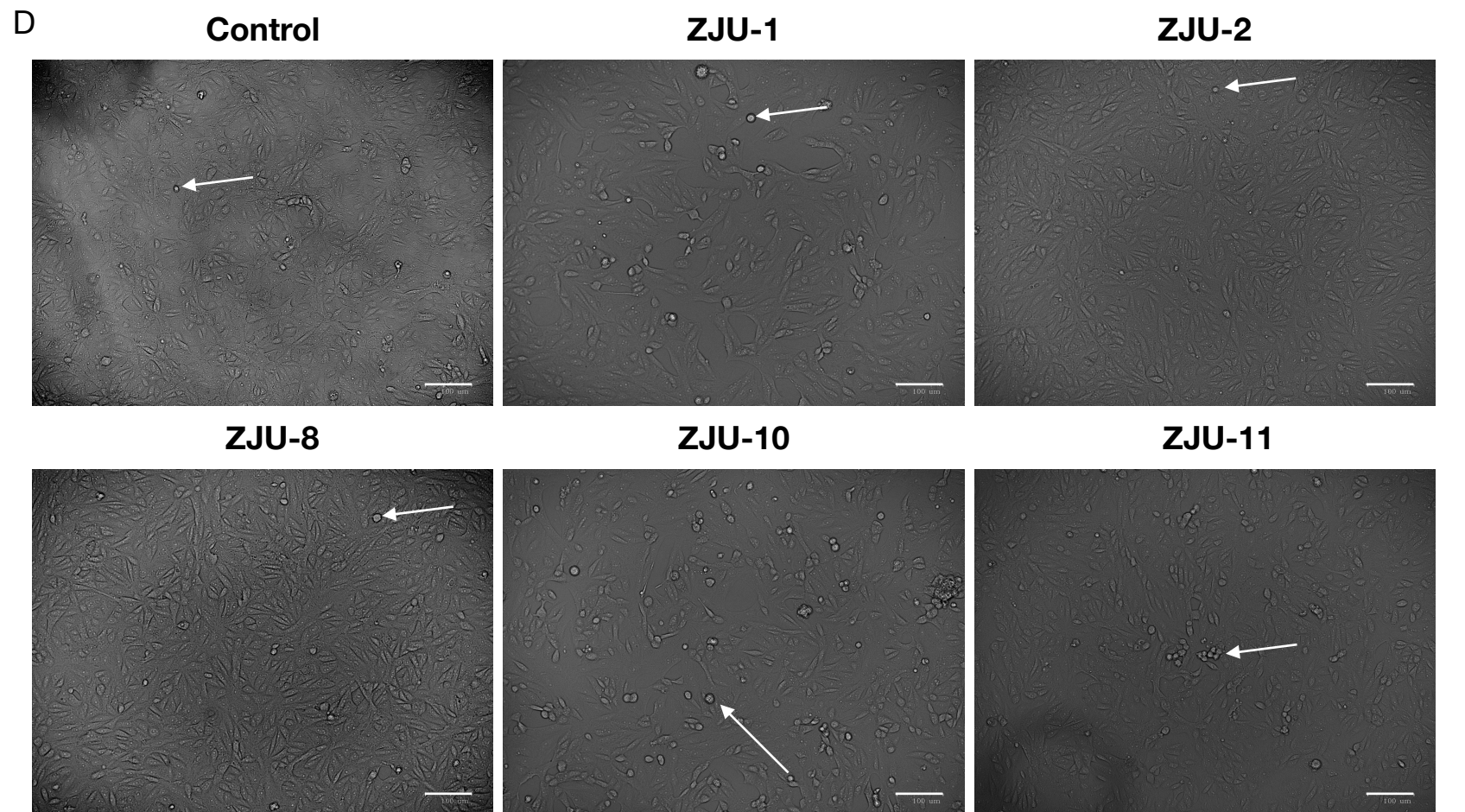
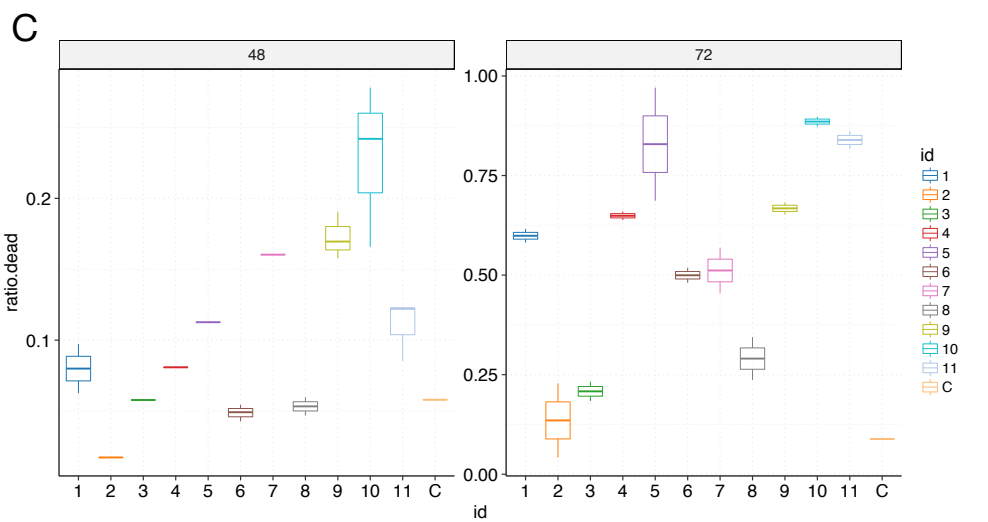


**Fig. S4.** The characterizations of the 11 viral isolates. (A) A representative TEM picture of the isolated SAR-CoV-2 viral particles, arrows indicate the iconic “crown” consisted of S proteins (Spike). (B) Time-series plots of the  $C_t$  values (corresponding to the multiplicative inverse of viral load) of the SAR-CoV-2 E gene (top) and N gene (bottom) over the course of infectivity assay. Each viral isolate plus the negative control “C” was color-coded accordingly. P-values were calculated using the ANOVA method to compare the means of all 11 viral isolates at each time point, excluding the negative control “C”. (C) Time-series plots of the  $C_t$  values of the SAR-CoV-2 E gene (left) and N gene (right) for each of the 11 patient-derived viral isolates. P-values were calculated between consecutive time points using the t-test and adjusted p-values are shown.

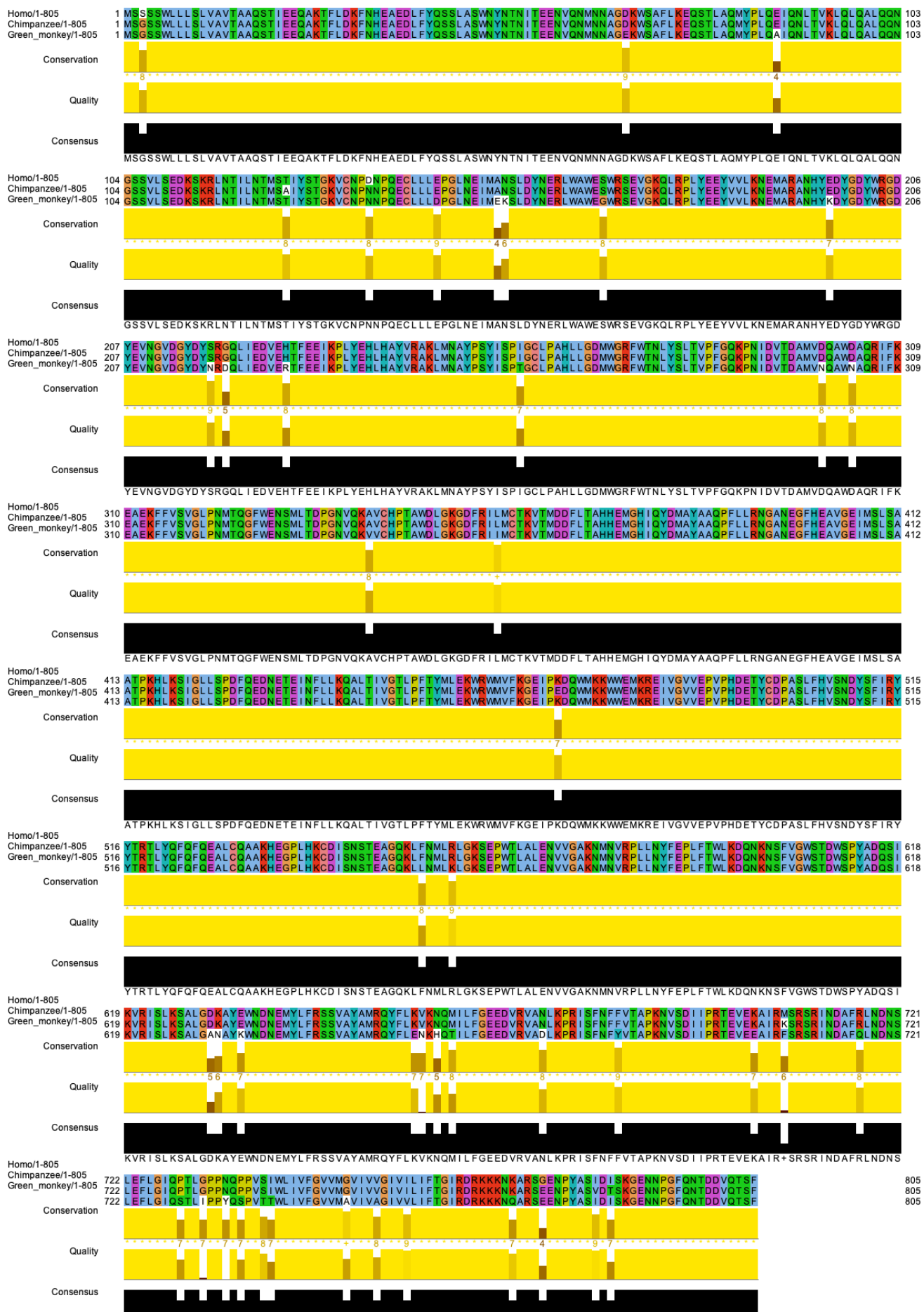


**B**

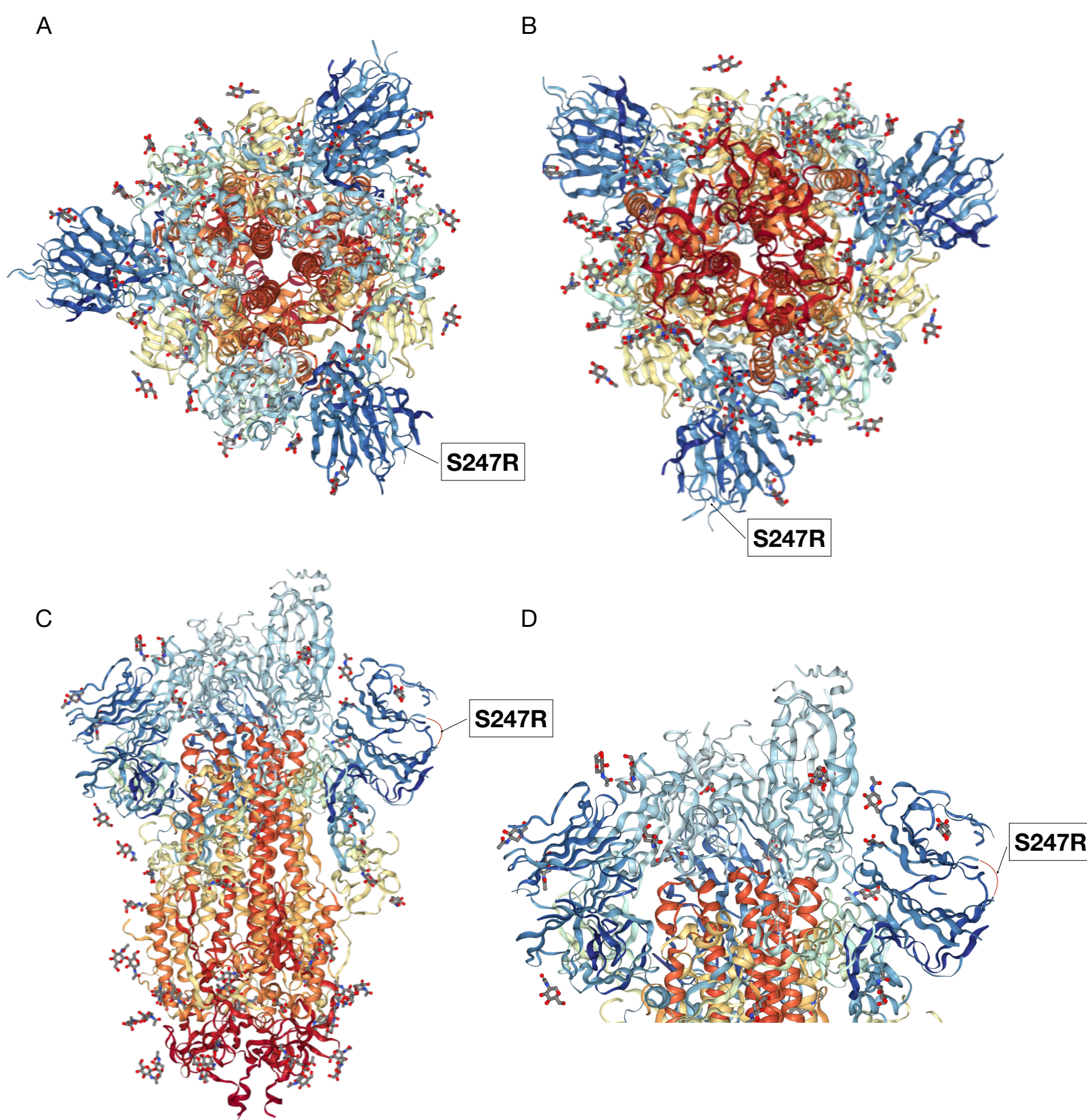
Viral strain ID	48 h post-infection	72 h post-infection
1	1	2
2	0	0
3	0	0.5
4	0	1
5	1	2
6	0	1.5
7	1	1
8	0	0.5
9	1.5	2.5
10	2	3
11	1	2



**Fig. S5.** Significant variations were observed in viral load and viral CPE among the 11 patient-derived isolates. (A) Significant variations in viral load can be observed based on E gene (left) and N gene (right). (B) CPE at 48h and 72h P.I. as evaluated by an expert's opinions. (C) CPE at 48h and 72h P.I. evaluated by quantitatively calculating the cell death ratio (ratio.dead) for 1-3 images per viral isolate. The results from (B) and (C) are highly correlated ( $R > 0.89$ ,  $p < 0.001$ ). (D) Representative images used for CPE evaluation, arrows indicate cells facing immediate death. Scale bars, 100  $\mu\text{m}$ .

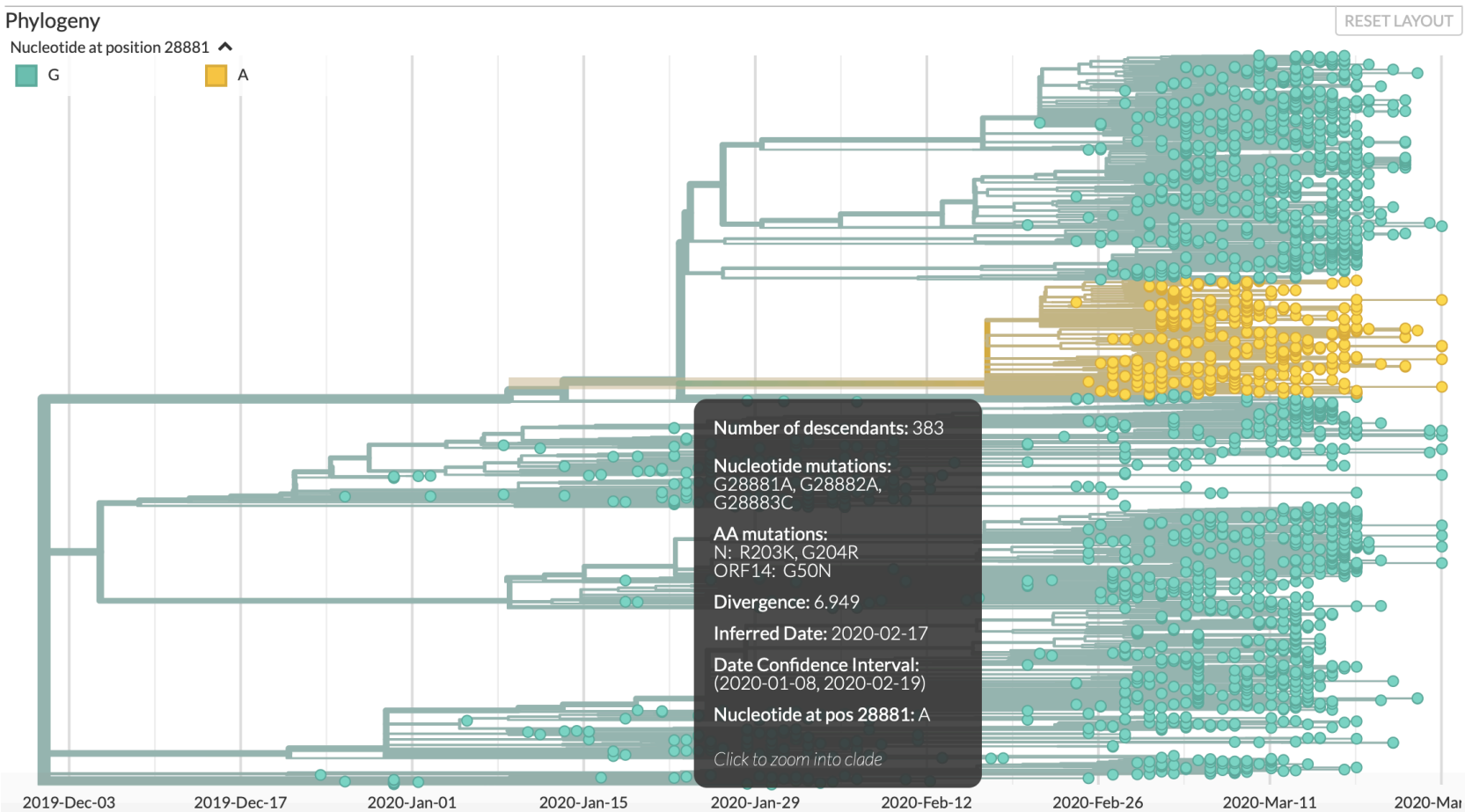


**Fig. S6.** The alignment of ACE2 protein sequences from human (Homo), Chimpanzee, and green monkey (from which the Vero-E6 cell line was derived). Note that overall the ACE2 proteins are highly similar to each other. The alignment and image were produced by Jalview.



**Fig. S7.** The 3D structure of the S-protein with the S247R overlay. The top (A), bottom (B), side (C), and close-up view (D) were provided. Note that the actual position of S247 was not determined in the original structure, hence a small red arc was in place to represent to the potential flexible loop conformation for (C) and (D). Also note that the protein complex is trimeric, but only one of the three mutations was labeled. The 3D structure of the S protein was visualized and downloaded from <https://www.rcsb.org/3d-view/6VSB/1>.





**A subclade of the S-D614G group**  
**Analyses downloaded on 3/31/2020**

**Fig. S8.** The trinucleotide mutation (G28881A, G28882A, and G28883C) was identified in the GISAID dataset and is the founding mutation for a large cluster of viral isolates within the S-D614G group (European clade).